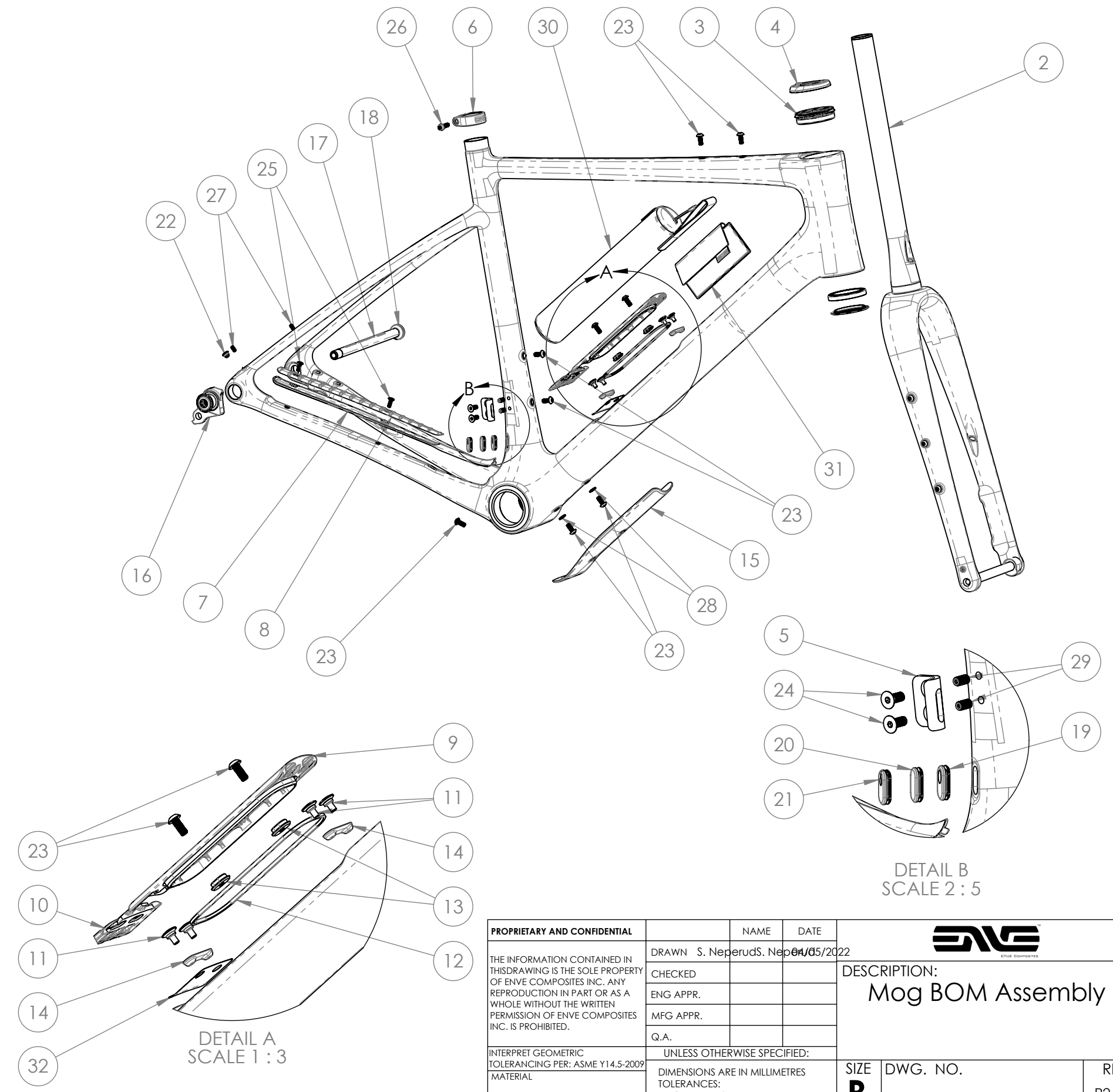



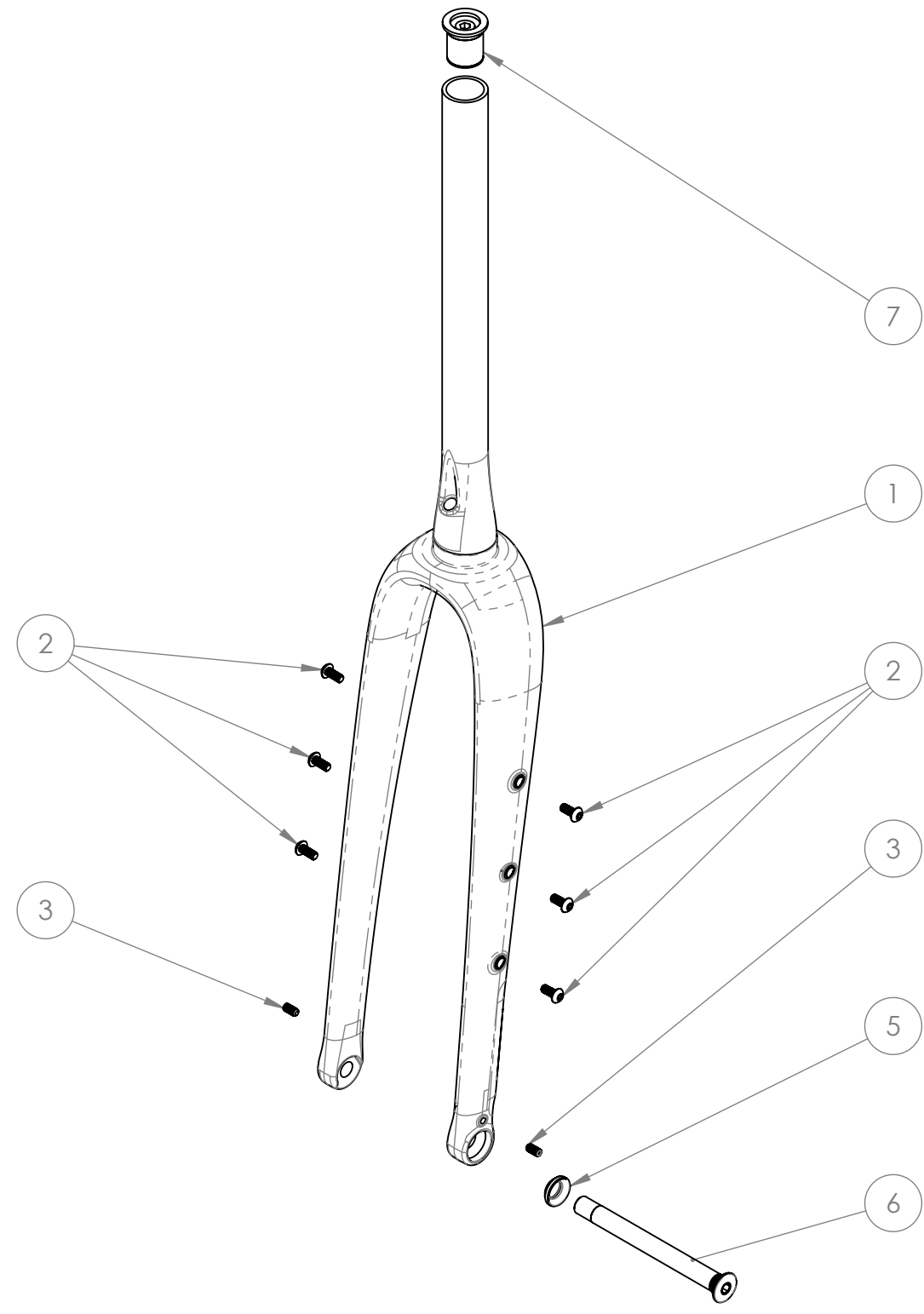
ITEM NO.	PART NUMBER	DESCRIPTION	QTY.	PACKING NOTES	ADDITIONAL PACKING NOTES
1	100-5004-xxx	56cm Gravel Frame	1	Foam Wrapped and Bagged	
2	200-2012-xxx_ASM	Integrated-Routing Gravel Fork Assembly (See Rake Chart for Size-Appropriate Rake)	1	Foam Wrapped and Bagged, Inserted in Fork Box	Place the Compression Plug (200-0000-001) in Round Cut-Out in Fork Box Insert and install 000-0050-003 and 000-0050-023 onto fork.
3	100-5005-005	HS INT Classic IS52/IS52 w Crown Race	1	Bag #1	Place Bag #1 in Bag #5, Place Bag #5 in Fork Box Accessory Cubby
4	100-5004-030	HS INT Classic Top Bearing Cover Sand	1	Bag #1	Place Bag #1 in Bag #5, Place Bag #5 in Fork Box Accessory Cubby
5	100-5004-010	Front Derailleur Tab	1	Bag #2	Place Bag #2 in Bag #5, Place Bag #5 in Fork Box Accessory Cubby
6	100-5004-011	Seatpost Collar, 27.2 post x 31.8 ID	1	Assembled with #25, in Bag #3	Place Bag #3 in Bag #5, Place Bag #5 in Fork Box Accessory Cubby
7	100-5004-012	Chainstay Guard Spine	1	Installed Using #24	
8	100-5004-013	Chainstay Guard Rubber Pad	1	Bonded To 100-5004-012	
9	100-5004-014	Cargo Bay Door	1	Installed (See Diagram)	
10	100-5004-015	Cargo Bay Slide Latch	1	Installed (See Diagram)	
11	100-5004-016	Cargo Bay Door Retention Screw	4	Installed (See Diagram)	
12	100-5004-017	Cargo Bay Door Gasket	1	Installed (See Diagram)	
13	100-5004-018	Cargo Bay Bottle Screw Thread Chip	2	Installed (See Diagram)	
14	100-5004-023	Cargo Bay Retention Screw Thread Plate	2	Installed (See Diagram)	
15	100-5004-024	Mog Downtube Guard	1	Installed using Double Sided Adhesive	
16	-	SRAM UDH Derailleur Hanger	1	Installed	
17	000-0050-050	Enve 12x142 Tapered Thru Axle for SRAM UDH	1	Installed	
18	200-2009-006	Tapered Thru-Axle Washer	1	Installed on #16	
19	100-5004-019	16x7 Cable Grommet - Shift Housing	1	Bag #2	Place Bag #2 in Bag #5, Place Bag #5 in Fork Box Accessory Cubby
20	100-5004-025	16x7 Cable Grommet - Blank	1	Installed	
21	100-5004-026	16x7 Cable Grommet - Di2 Wire	1	Bag #2	Place Bag #2 in Bag #5, Place Bag #5 in Fork Box Accessory Cubby
22	000-0050-052	6mm Cable Routing Hole Plug	1	Bag #4	Place Bag #4 in Bag #5, Place Bag #5 in Fork Box Accessory Cubby
23	000-0050-003	M5 x 0.8 x 12mm Button Head Screw, Alloy, Black Ano	9	Installed	
24	000-0050-028	M5x0.8 x 12mm Flat-Head Hex Screw, SS, Black	2	Bag #2	Place Bag #2 in Bag #5, Place Bag #5 in Fork Box Accessory Cubby
25	000-0050-051	M4x0.7 x 12mm Flat-Head Hex Screw, 7075-T6, Black Ano	2	Used to Install #6 and #7	
26	000-0040-000	M5x0.8 x 17 SHCS w/ Washer, Ti	1	Assembled with #5, in Bag #3	Place Bag #3 in Bag #5, Place Bag #5 in Fork Box Accessory Cubby
27	000-0050-046	M4x0.7 x 8mm Set Screw w/ Threadlock, Cup Point, Stainless, Black	2	Installed	
28	000-0050-009	M5 Flat Washer, SS, Black	2	Installed	
29	000-0050-023	M5x0.8 x 10mm Cup-Point Set Screw, Chromoly, Black	2	Installed	
30	100-5004-027	Cargo Bay Storage Bag	2	OEM Packaging	Place in Fork Box Accessory Cubby
31	100-5004-028	Cable Management Strap	1	Installed with Double Sided Adhesive	
32	100-5004-031	Cargo Bay Latch Anti-Friction Sticker	1	Installed	
33	000-1000-988	ENVE Frame Get Started Card	1	Place in Fork Box Accessory Cubby	
34	100-5002-216	ENVE Frame Finishing Kit	1	Place in Fork Box Accessory Cubby	
35	000-1000-981	Torque Wrench	1	Place in Fork Box Accessory Cubby	
36	000-1001-150	Melee/Mog/Fray Frame Box Assembly	1		



<b>PROPRIETARY AND CONFIDENTIAL</b>		NAME	DATE	 ENVE COMPOSITES
THE INFORMATION CONTAINED IN THIS DRAWING IS THE SOLE PROPERTY OF ENVE COMPOSITES INC. ANY REPRODUCTION IN PART OR AS A WHOLE WITHOUT THE WRITTEN PERMISSION OF ENVE COMPOSITES INC. IS PROHIBITED.		DRAWN	S. Neperud/S. Neperud/05/2022	
		CHECKED		
		ENG APPR.		
		MFG APPR.		
INTERPRET GEOMETRIC TOLERANCING PER: ASME Y14.5-2009		UNLESS OTHERWISE SPECIFIED:		
MATERIAL		DIMENSIONS ARE IN MILLIMETRES		
FINISH		TOLERANCES:		
DO NOT SCALE DRAWING		ANGULAR: ±1°		
		UNSPECIFIED XX ±0.5		
		ONE PLACE DECIMAL XX.X ±0.2		
		TWO PLACE DECIMAL XX.XX ±0.10		
SIZE	DWG. NO.	REV		
<b>B</b>	100-5004-xxx_Service BOM	P2		
SCALE: 1:6	WEIGHT:	SHEET 1 OF 21		

8 7 6 5 4 3 2 1


D  
C  
B  
A



ITEM NO.	PART NUMBER	DESCRIPTION	QTY.
1	200-2012-001/002/003	INT Gravel Fork, Unpainted: 200-2012-001 - 53mm Rake 200-2012-002 - 55mm Rake 200-2012-003 - 57mm Rake	1
2	000-0050-003	M5 x 0.8 x 12mm Button Head Screw, Alloy, Black Ano	6
3	000-0050-023	M5x0.8 x 10mm Cup-Point Set Screw, Chromoly, Black	3
5	200-2009-006	Tapered 12mm Thru-Axle Washer	1
6	200-2009-005	Tapered Thru-Axle for Road/Gravel Forks	1
7	200-0000-032	Compression Plug Assembly W/O Top Cap	1

Mog Painted Fork Assembly P/Ns		
Frame Size	Fork Rake	Fork Replacement P/N (Painted, Sand)
49	57	200-2012-103
52	57	200-2012-103
54	55	200-2012-102
56	55	200-2012-102
58	53	200-2012-101
60	53	200-2012-101

A


<b>PROPRIETARY AND CONFIDENTIAL</b>  THE INFORMATION CONTAINED IN THIS DRAWING IS THE SOLE PROPERTY OF ENVE COMPOSITES INC. ANY REPRODUCTION IN PART OR AS A WHOLE WITHOUT THE WRITTEN PERMISSION OF ENVE COMPOSITES INC. IS PROHIBITED.	DRAWN S. Neperud S. Neperud 01/05/2022	NAME DATE	  <b>DESCRIPTION:</b> Integrated-Routing Gravel Fork Service Parts Assembly
	CHECKED		
	ENG APPR.		
	MFG APPR.		
	Q.A.		
INTERPRET GEOMETRIC TOLERANCING PER: ASME Y14.5-2009 MATERIAL FINISH DO NOT SCALE DRAWING	UNLESS OTHERWISE SPECIFIED:  DIMENSIONS ARE IN MILLIMETRES TOLERANCES: ANGULAR: ±1° UNSPECIFIED XX ±0.5 ONE PLACE DECIMAL XX.X ±0.2 TWO PLACE DECIMAL XX.XX ±0.10		SIZE <b>B</b> DWG. NO. 100-5004-xxx_Service BOM REV
SCALE: 1:4		WEIGHT:	SHEET 2 OF 21

8 7 6 5 4 3 2 1

AVAILABLE SERVICE KITS AND PARTS	
SERVICE KIT P/N	DESCRIPTION
100-5004-901	Service Frame F Der. Hanger Kit B
100-5004-902	Service Frame Mog CS Protector Kit
100-5004-903	Service Frame Cargo Bay Door/Latch Sand
100-5004-904	Service Frame Cargo Bay Hardware
100-5004-905	ENVE Seat Post Collar 27.2
100-5004-906	Service Frame Grommet Kit A
000-0050-903	Service M5 Accessory Bolt Kit
000-0050-946	Service Frame M4 Fender Mount Screw Kit
000-0050-950	Service Frame Tapered TA 12x142 UDH
100-5005-005	HS INT Classic IS52/IS52 w Crown Race
100-5004-017	Cargo Bay Door Gasket
100-5004-024	Mog Downtube Guard
100-5004-027	Cargo Bay Storage Bag
100-5004-028	Cable Management Strap
100-5004-030	HS INT Classic Top Bearing Cover Sand
-	SRAM UDH Derailleur Hanger
200-2009-008	Service Fork Tapered TA 12x100
200-0000-032	Compression Plug Assembly W/O Top Cap
100-5004-031	Cargo Bay Latch Anti-Friction Sticker

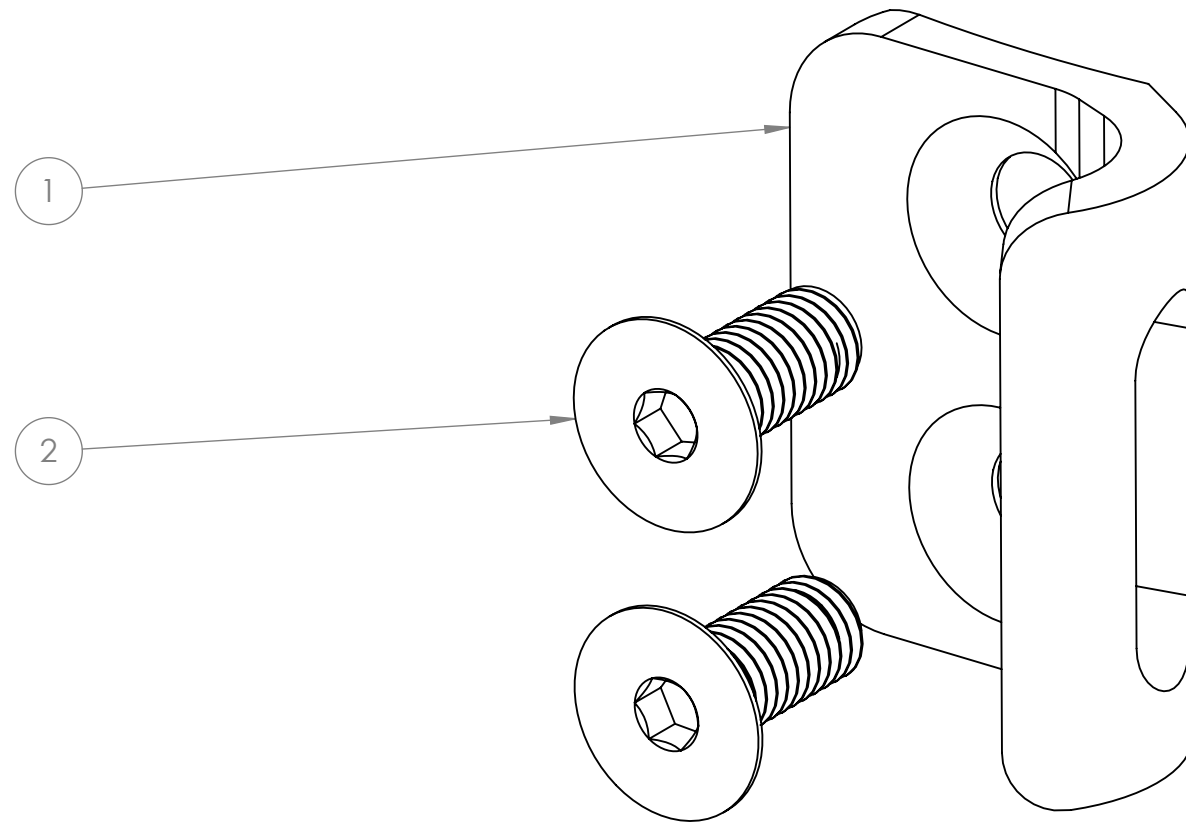
FORK RAKE CHART		
Frame Size	Fork Rake	Fork Replacement P/N (Painted, Sand)
49	57	200-2012-103
52	57	200-2012-103
54	55	200-2012-102
56	55	200-2012-102
58	53	200-2012-101
60	53	200-2012-101


MOG Geometry						
	49	52	54	56	58	60
Reach	367	378	389	397	405	415
Stack	520	543	565	587	605	630
STL(c-top)	439	459	480	500	518	540
SA	74.5	74	73.75	73.5	73.2	72.75
HA	71	71	71.25	71.25	71.5	71.5
HTL	92	117	140	163	183	209
BBD	77	77	75	75	73	73
CSL	420	420	420	420	420	420
WB	993	1012	1027	1042	1053	1071
FC	580	599	613	629	639	657
RC	412.9	412.9	413.2	413.2	413.6	413.6
RAKE	57	57	55	55	53	53
TT Length	511	533	553	571	587	610
BB Height @ 50	289	289	291	291	293	293
BB Height @ 44	279	279	281	281	283	283
BB Height @ 40	277	277	279	279	281	281
BB Height @ 35	273	273	275	275	277	277
Standover @ 50	714	734	756	776	796	819
Standover @ 44	705	725	747	767	787	809
Standover @ 40	702	722	744	764	784	807
Standover @ 35	698	718	740	760	780	803
Trail @ 50	65.5	65.6	66	66	66.4	66.4
Trail @ 44	62.3	62.3	62.8	62.8	63.2	63.2
Trail @ 40	61.4	61.4	61.9	61.9	62.4	62.4
Trail @ 35	60.1	60.1	60.6	60.6	61.1	61.1

<b>PROPRIETARY AND CONFIDENTIAL</b>  THE INFORMATION CONTAINED IN THIS DRAWING IS THE SOLE PROPERTY OF ENVE COMPOSITES INC. ANY REPRODUCTION IN PART OR AS A WHOLE WITHOUT THE WRITTEN PERMISSION OF ENVE COMPOSITES INC. IS PROHIBITED.	DRAWN S. Neperud S. Neperud 01/05/2022	NAME DATE	  <b>DESCRIPTION:</b> Mog Service Parts
	CHECKED		
	ENG APPR.		
	MFG APPR.		
INTERPRET GEOMETRIC TOLERANCING PER: ASME Y14.5-2009 MATERIAL  FINISH  DO NOT SCALE DRAWING	UNLESS OTHERWISE SPECIFIED:  DIMENSIONS ARE IN MILLIMETRES TOLERANCES: ANGULAR: ±1° UNSPECIFIED XX ±0.5 ONE PLACE DECIMAL XX.X ±0.2 TWO PLACE DECIMAL XX.XX ±0.10		SIZE <b>B</b>
	DWG. NO. 100-5004-xxx_Service BOM	REV	SCALE: 1:20 WEIGHT: SHEET 3 OF 21

# SERVICE KIT 100-5004-901

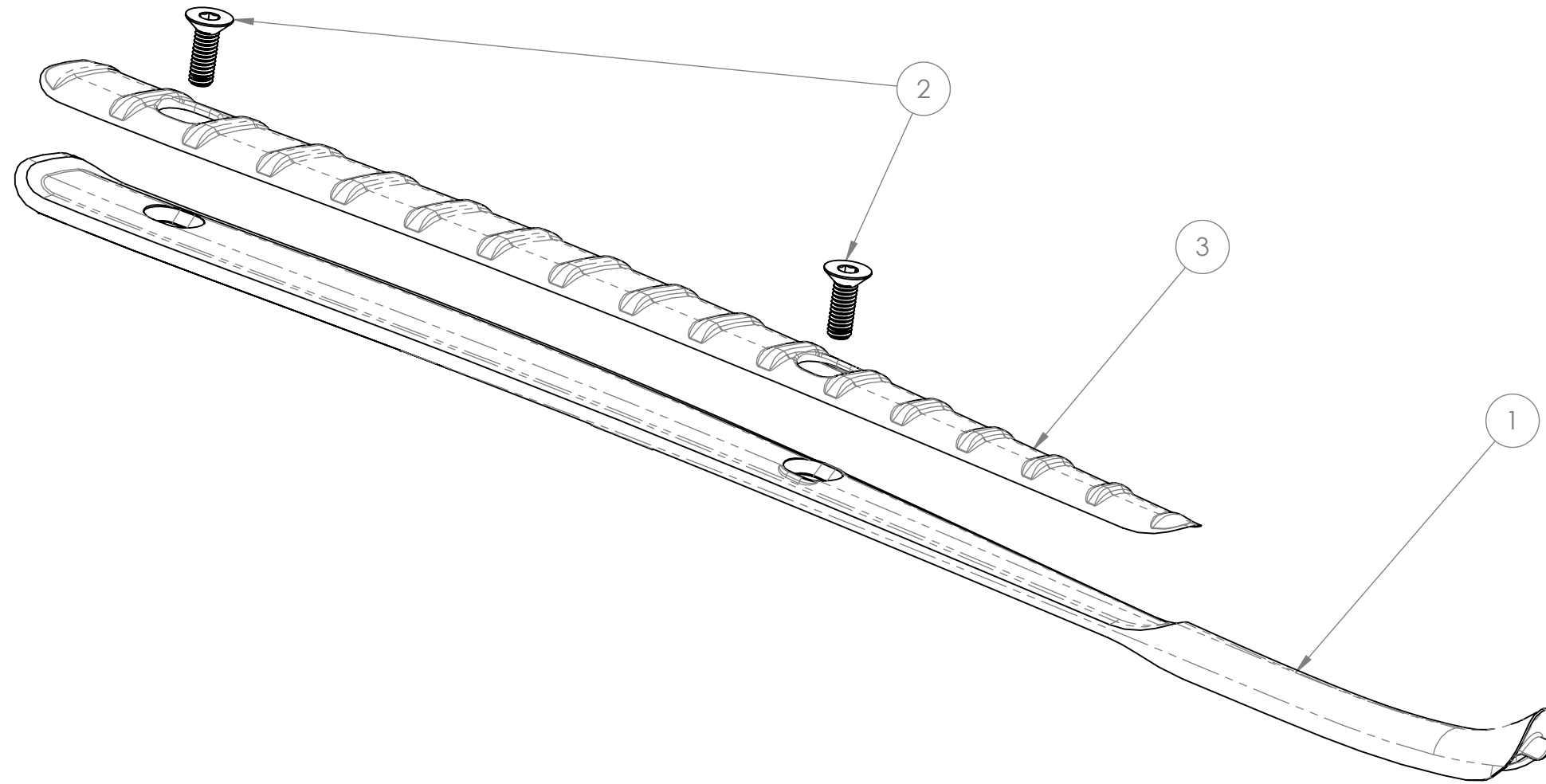
ITEM NO.	PART NUMBER	DESCRIPTION	QTY.
1	100-5004-010	Front Derailleur Tab	1
2	000-0050-028	M5x0.8 x 12mm Flat-Head Hex Screw, SS, Black	2




<b>PROPRIETARY AND CONFIDENTIAL</b>  THE INFORMATION CONTAINED IN THIS DRAWING IS THE SOLE PROPERTY OF ENVE COMPOSITES INC. ANY REPRODUCTION IN PART OR AS A WHOLE WITHOUT THE WRITTEN PERMISSION OF ENVE COMPOSITES INC. IS PROHIBITED.	DRAWN S. Neperud S. Neperud DATE 01/05/2022	NAME DATE	  DESCRIPTION: <b>Service Frame F Der. Hanger Kit B</b>
	CHECKED		
	ENG APPR.		
	MFG APPR.		
INTERPRET GEOMETRIC TOLERANCING PER: ASME Y14.5-2009 MATERIAL FINISH DO NOT SCALE DRAWING	UNLESS OTHERWISE SPECIFIED:  DIMENSIONS ARE IN MILLIMETRES TOLERANCES: ANGULAR: ±1° UNSPECIFIED XX ±0.5 ONE PLACE DECIMAL XX.X ±0.2 TWO PLACE DECIMAL XX.XX ±0.10		SIZE <b>B</b>
	DWG. NO. 100-5004-901	REV	SCALE: 3:1 WEIGHT: SHEET 4 OF 21

SERVICE KIT 100-5004-902

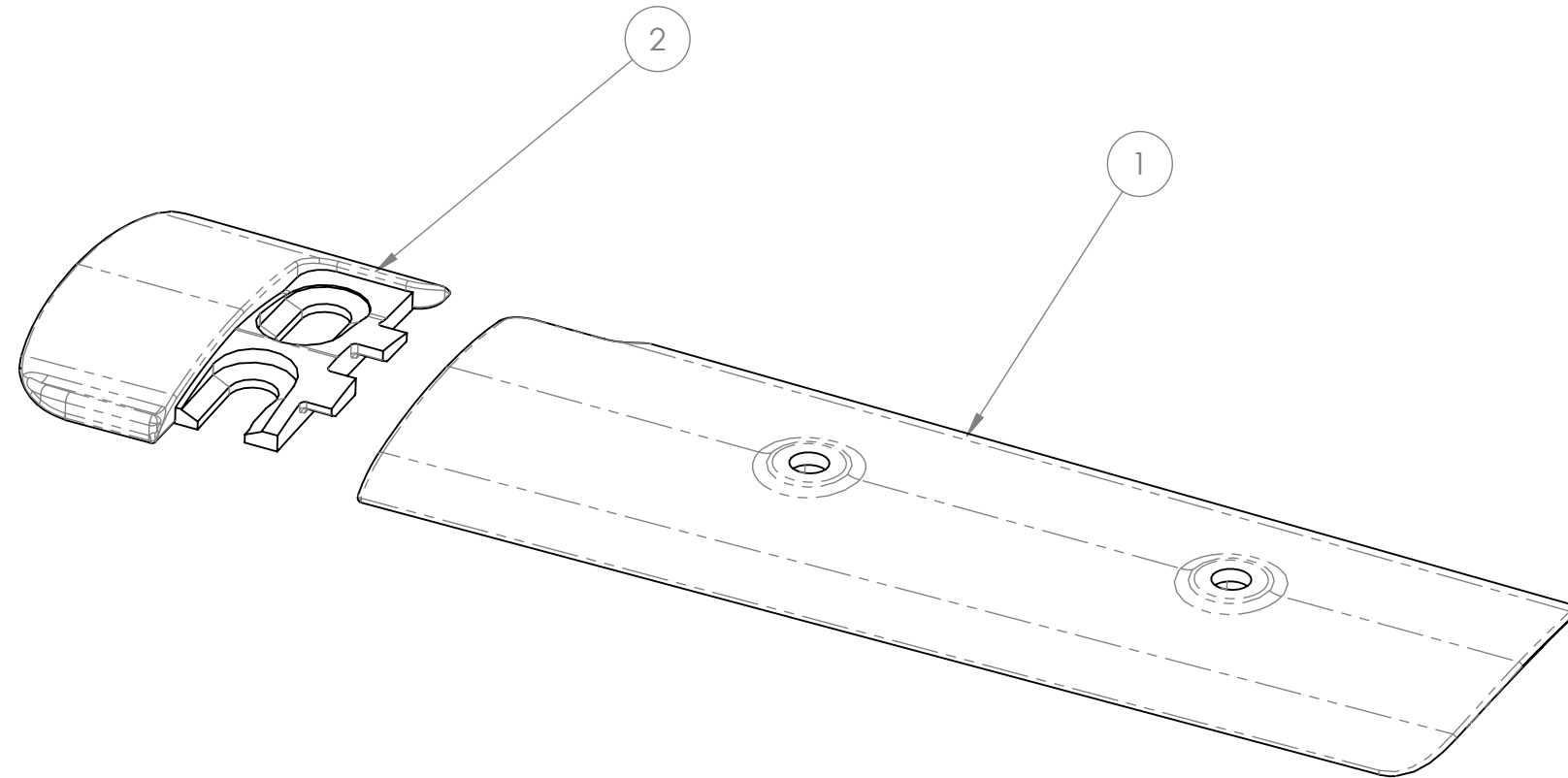
ITEM NO.	PART NUMBER	DESCRIPTION	QTY.
1	100-5004-012	Chainstay Guard Spine	1
2	000-0050-051	M4x0.7 x 12mm Flat-Head Hex Screw, 7075-T6, Black Ano	2
3	100-5004-013	Chainstay Guard Rubber Pad (Bonded to Spine)	1




<b>PROPRIETARY AND CONFIDENTIAL</b>		NAME	DATE	 <b>Service Frame Mog CS Protector Kit</b>	
THE INFORMATION CONTAINED IN THIS DRAWING IS THE SOLE PROPERTY OF ENVE COMPOSITES INC. ANY REPRODUCTION IN PART OR AS A WHOLE WITHOUT THE WRITTEN PERMISSION OF ENVE COMPOSITES INC. IS PROHIBITED.		DRAWN	S. Neperud, S. Neperud		01/05/2022
		CHECKED			
		ENG APPR.			
		MFG APPR.			
		Q.A.			
INTERPRET GEOMETRIC TOLERANCING PER: ASME Y14.5-2009 MATERIAL		UNLESS OTHERWISE SPECIFIED:		SIZE <b>B</b>	
FINISH		DIMENSIONS ARE IN MILLIMETRES TOLERANCES: ANGULAR: ±1° UNSPECIFIED XX ±0.5 ONE PLACE DECIMAL XX.X ±0.2 TWO PLACE DECIMAL XX.XX ±0.10		DWG. NO. 100-5004-902	
DO NOT SCALE DRAWING				REV SCALE: 1:1 WEIGHT: SHEET 5 OF 21	

# SERVICE KIT 100-5004-903

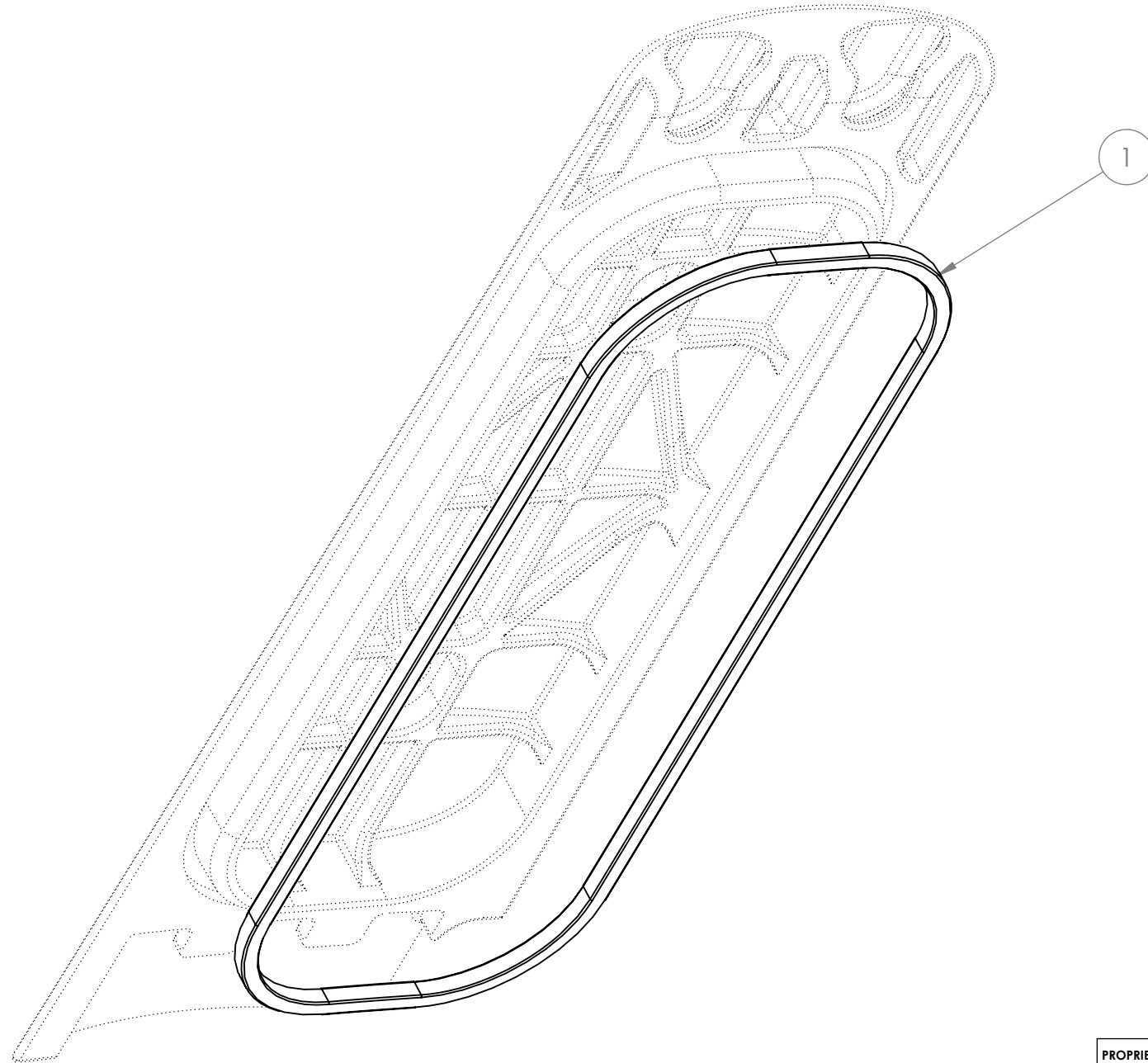
ITEM NO.	PART NUMBER	DESCRIPTION	QTY.
1	100-5004-014	Cargo Bay Door	1
2	100-5004-015	Cargo Bay Slide Latch	1




<b>PROPRIETARY AND CONFIDENTIAL</b>		NAME	DATE		
THE INFORMATION CONTAINED IN THIS DRAWING IS THE SOLE PROPERTY OF ENVE COMPOSITES INC. ANY REPRODUCTION IN PART OR AS A WHOLE WITHOUT THE WRITTEN PERMISSION OF ENVE COMPOSITES INC. IS PROHIBITED.		DRAWN	S. Neperud S. Neperud		05/2022
		CHECKED			
		ENG APPR.			
		MFG APPR.			
		Q.A.			
INTERPRET GEOMETRIC TOLERANCING PER: ASME Y14.5-2009		UNLESS OTHERWISE SPECIFIED:		DESCRIPTION: <b>Service Frame Cargo Bay Door/Latch Sand</b>	
MATERIAL		DIMENSIONS ARE IN MILLIMETRES TOLERANCES: ANGULAR: ±1° UNSPECIFIED XX ±0.5 ONE PLACE DECIMAL XX.X ±0.2 TWO PLACE DECIMAL XX.XX ±0.10			
FINISH		SIZE	DWG. NO.		REV
DO NOT SCALE DRAWING		<b>B</b>	100-5004-903		
		SCALE: 1:1	WEIGHT:	SHEET 6 OF 21	

SERVICE PART 100-5004-017

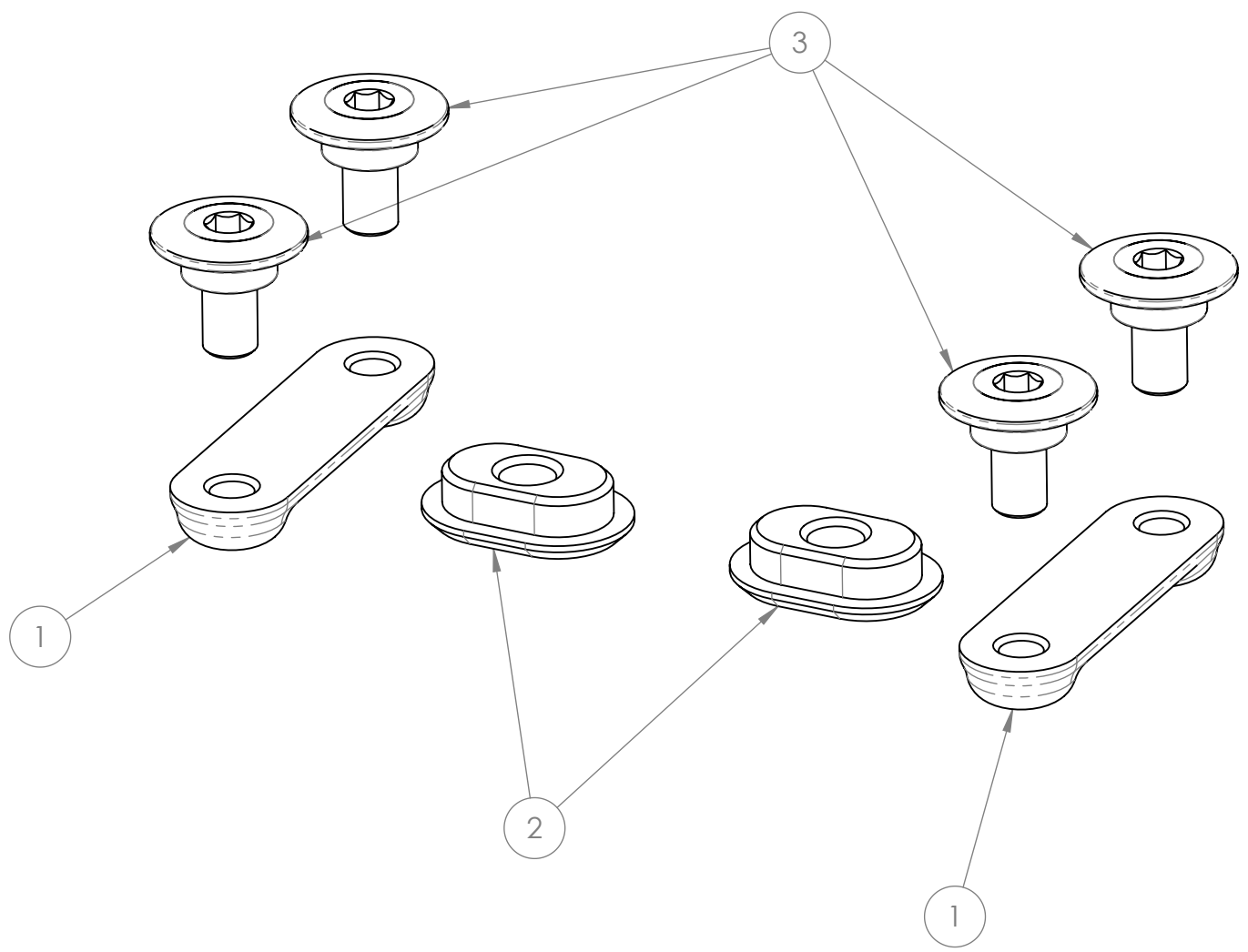
ITEM NO.	PART NUMBER	DESCRIPTION	QTY.
1	100-5004-017	Cargo Bay Door Gasket	1




<b>PROPRIETARY AND CONFIDENTIAL</b>  THE INFORMATION CONTAINED IN THIS DRAWING IS THE SOLE PROPERTY OF ENVE COMPOSITES INC. ANY REPRODUCTION IN PART OR AS A WHOLE WITHOUT THE WRITTEN PERMISSION OF ENVE COMPOSITES INC. IS PROHIBITED.	DRAWN S. Neperud S. Neperud 01/05/2022	NAME DATE	  <b>DESCRIPTION:</b> Cargo Bay Door Gasket
	CHECKED		
	ENG APPR.		
	MFG APPR.		
INTERPRET GEOMETRIC TOLERANCING PER: ASME Y14.5-2009 MATERIAL  FINISH	UNLESS OTHERWISE SPECIFIED:  DIMENSIONS ARE IN MILLIMETRES TOLERANCES: ANGULAR: ±1° UNSPECIFIED XX ±0.5 ONE PLACE DECIMAL XX.X ±0.2 TWO PLACE DECIMAL XX.XX ±0.10		Q.A.
DO NOT SCALE DRAWING	SIZE <b>B</b>	DWG. NO. 100-5004-017	REV
	SCALE: 3:2	WEIGHT:	SHEET 7 OF 21

# SERVICE KIT 100-5004-904

ITEM NO.	PART NUMBER	DESCRIPTION	QTY.
1	100-5004-023	Cargo Bay Retention Screw Thread Plate	2
2	100-5004-018	Cargo Bay Bottle Screw Thread Chip	2
3	100-5004-016	Cargo Bay Door Retention Screw	4

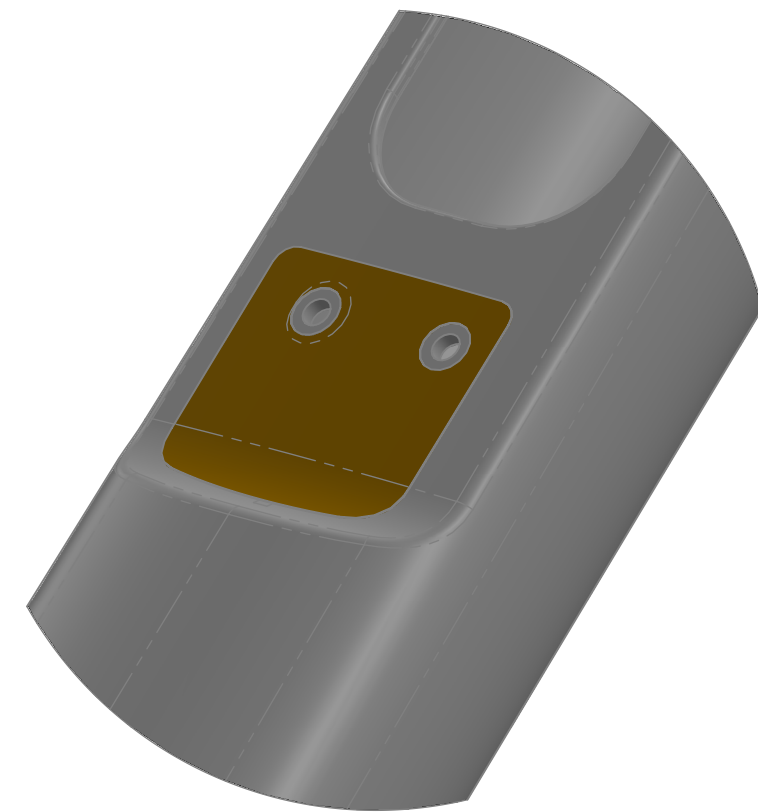
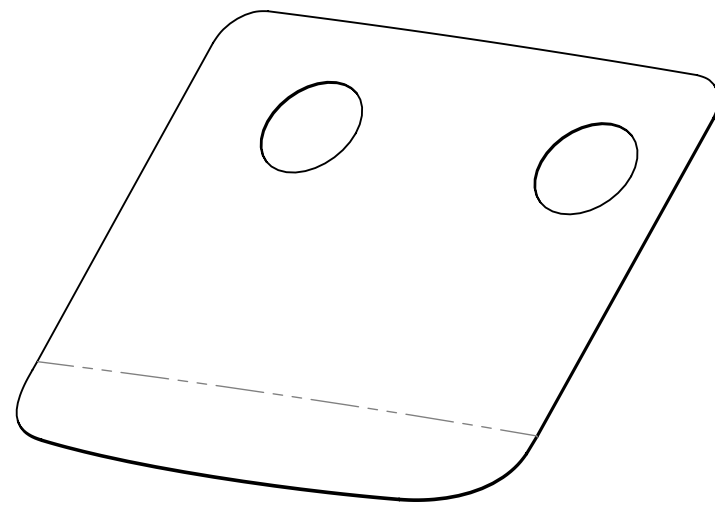


<b>PROPRIETARY AND CONFIDENTIAL</b>  THE INFORMATION CONTAINED IN THIS DRAWING IS THE SOLE PROPERTY OF ENVE COMPOSITES INC. ANY REPRODUCTION IN PART OR AS A WHOLE WITHOUT THE WRITTEN PERMISSION OF ENVE COMPOSITES INC. IS PROHIBITED.	DRAWN S. Neperud S. Neperud DATE 01/05/2022	NAME DATE	  <b>DESCRIPTION:</b> Service Frame Cargo Bay Hardware
	CHECKED		
	ENG APPR.		
	MFG APPR.		
INTERPRET GEOMETRIC TOLERANCING PER: ASME Y14.5-2009 MATERIAL FINISH DO NOT SCALE DRAWING	UNLESS OTHERWISE SPECIFIED:  DIMENSIONS ARE IN MILLIMETRES TOLERANCES: ANGULAR: ±1° UNSPECIFIED XX ±0.5 ONE PLACE DECIMAL XX.X ±0.2 TWO PLACE DECIMAL XX.XX ±0.10	Q.A.	SIZE <b>B</b> DWG. NO. 100-5004-904 SCALE: 2:1 WEIGHT: SHEET 8 OF 21
			REV




SERVICE PART 100-5004-031

ITEM NO.	PART NUMBER	DESCRIPTION	QTY.
1	100-5004-031	Cargo Bay Latch Anti-Friction Sticker	1

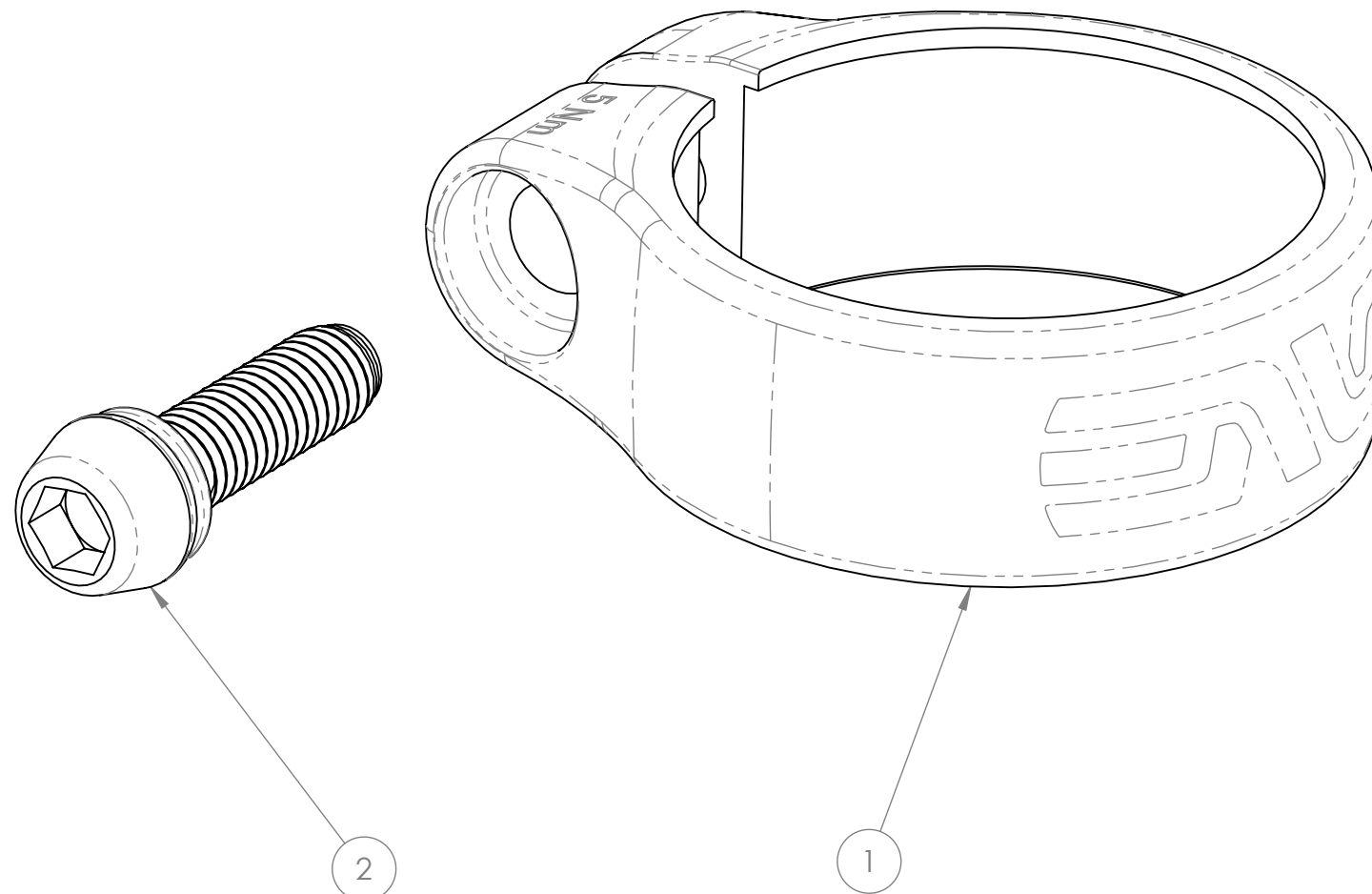



SHOWN AS INSTALLED. ALIGN HOLES IN STICKER WITH SCREW HOLES ON FRAME.

<b>PROPRIETARY AND CONFIDENTIAL</b>  THE INFORMATION CONTAINED IN THIS DRAWING IS THE SOLE PROPERTY OF ENVE COMPOSITES INC. ANY REPRODUCTION IN PART OR AS A WHOLE WITHOUT THE WRITTEN PERMISSION OF ENVE COMPOSITES INC. IS PROHIBITED.	DRAWN S. Neperud S. Neperud 01/05/2022	NAME DATE	  DESCRIPTION: <b>Cargo Bay Latch Anti-Friction Sticker</b>		
	CHECKED				
	ENG APPR.				
	MFG APPR.				
	Q.A.				
INTERPRET GEOMETRIC TOLERANCING PER: ASME Y14.5-2009 MATERIAL FINISH DO NOT SCALE DRAWING	UNLESS OTHERWISE SPECIFIED:  DIMENSIONS ARE IN MILLIMETRES TOLERANCES: ANGULAR: ±1° UNSPECIFIED XX ±0.5 ONE PLACE DECIMAL XX.X ±0.2 TWO PLACE DECIMAL XX.XX ±0.10		SIZE <b>B</b>	DWG. NO. 100-5004-031	REV P2
SCALE: 2:1		WEIGHT:	SHEET 9 OF 21		

SERVICE KIT 100-5004-905

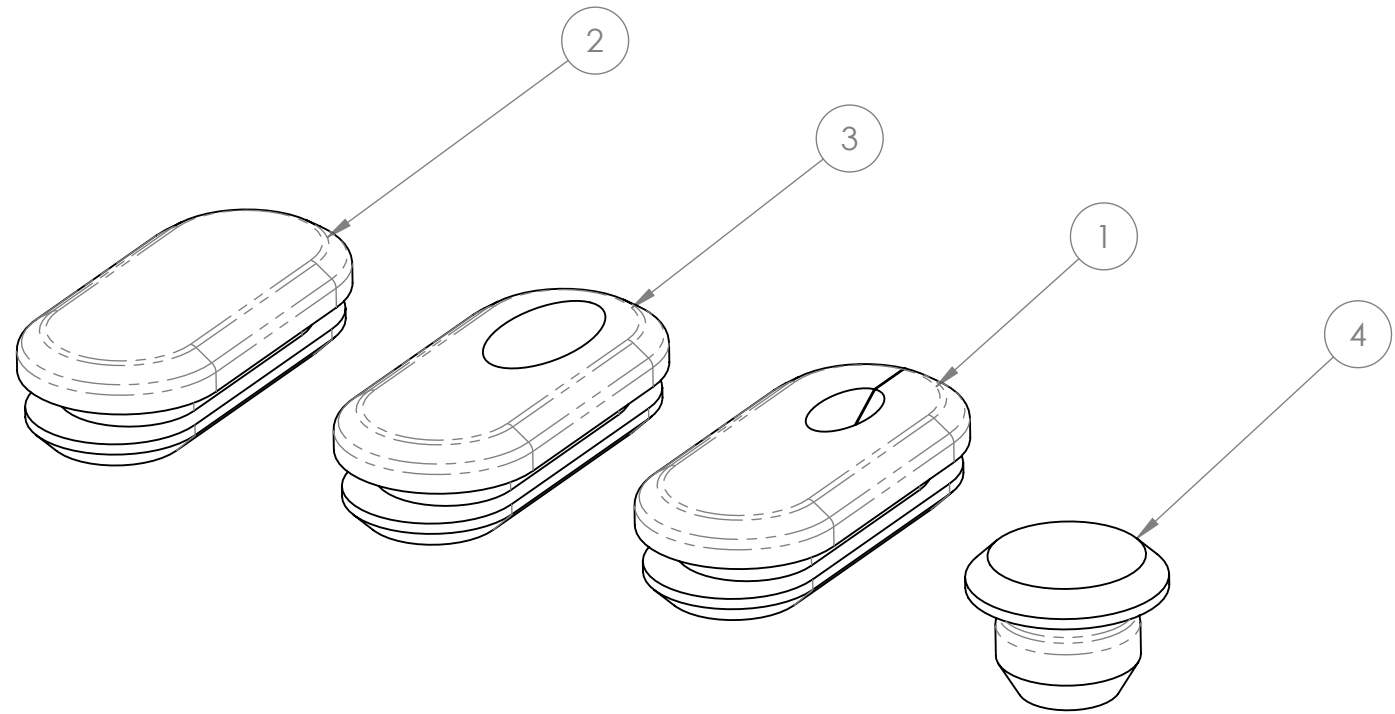
ITEM NO.	PART NUMBER	DESCRIPTION	QTY.
1	100-5004-011	Seatpost Collar, 27.2 post x 31.8 ID	1
2	000-0040-000	M5x0.8 x 17 SHCS w/ Washer, Ti	1




<b>PROPRIETARY AND CONFIDENTIAL</b>  THE INFORMATION CONTAINED IN THIS DRAWING IS THE SOLE PROPERTY OF ENVE COMPOSITES INC. ANY REPRODUCTION IN PART OR AS A WHOLE WITHOUT THE WRITTEN PERMISSION OF ENVE COMPOSITES INC. IS PROHIBITED.	DRAWN S. Neperud S. Neperud 01/05/2022	NAME DATE	  DESCRIPTION: <b>ENVE Seat Post Collar 27.2</b>
	CHECKED		
	ENG APPR.		
	MFG APPR.		
INTERPRET GEOMETRIC TOLERANCING PER: ASME Y14.5-2009 MATERIAL FINISH	UNLESS OTHERWISE SPECIFIED:  DIMENSIONS ARE IN MILLIMETRES TOLERANCES: ANGULAR: ±1° UNSPECIFIED XX ±0.5 ONE PLACE DECIMAL XX.X ±0.2 TWO PLACE DECIMAL XX.XX ±0.10		Q.A.   SIZE <b>B</b> DWG. NO. 100-5004-905 REV
DO NOT SCALE DRAWING	SCALE: 3:1	WEIGHT:	SHEET 10 OF 21

# SERVICE KIT 100-5004-906

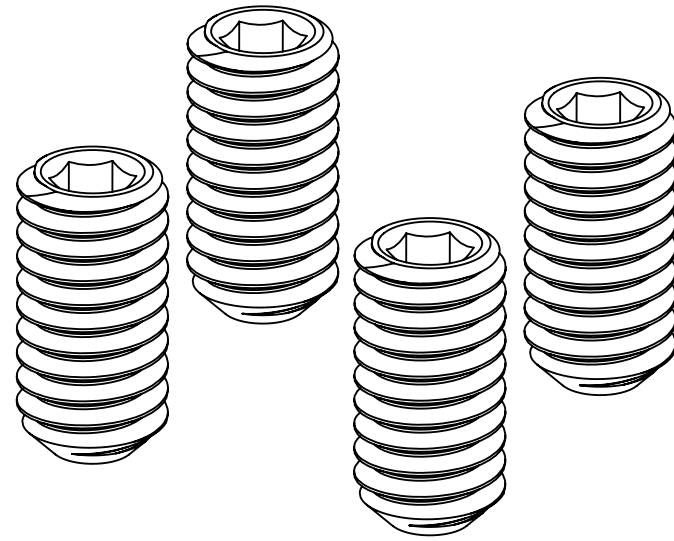
ITEM NO.	PART NUMBER	DESCRIPTION	QTY.
1	100-5004-026	16x7 Cable Grommet - Di2 Wire	1
2	100-5004-025	16x7 Cable Grommet - Blank	1
3	100-5004-019	16x7 Cable Grommet - Shift Housing	1
4	000-0050-052	6mm Cable Routing Hole Plug	1




<b>PROPRIETARY AND CONFIDENTIAL</b>  THE INFORMATION CONTAINED IN THIS DRAWING IS THE SOLE PROPERTY OF ENVE COMPOSITES INC. ANY REPRODUCTION IN PART OR AS A WHOLE WITHOUT THE WRITTEN PERMISSION OF ENVE COMPOSITES INC. IS PROHIBITED.	DRAWN S. Neperud S. Neperud 01/05/2022	NAME DATE	  <b>DESCRIPTION:</b> Service Frame Grommet Kit A
	CHECKED		
	ENG APPR.		
	MFG APPR.		
	Q.A.		
INTERPRET GEOMETRIC TOLERANCING PER: ASME Y14.5-2009 MATERIAL FINISH DO NOT SCALE DRAWING	UNLESS OTHERWISE SPECIFIED:  DIMENSIONS ARE IN MILLIMETRES TOLERANCES: ANGULAR: ±1° UNSPECIFIED XX ±0.5 ONE PLACE DECIMAL XX.X ±0.2 TWO PLACE DECIMAL XX.XX ±0.10		SIZE <b>B</b> DWG. NO. 100-5004-906 SCALE: 3:1 WEIGHT: SHEET 11 OF 21

SERVICE KIT 000-0050-946

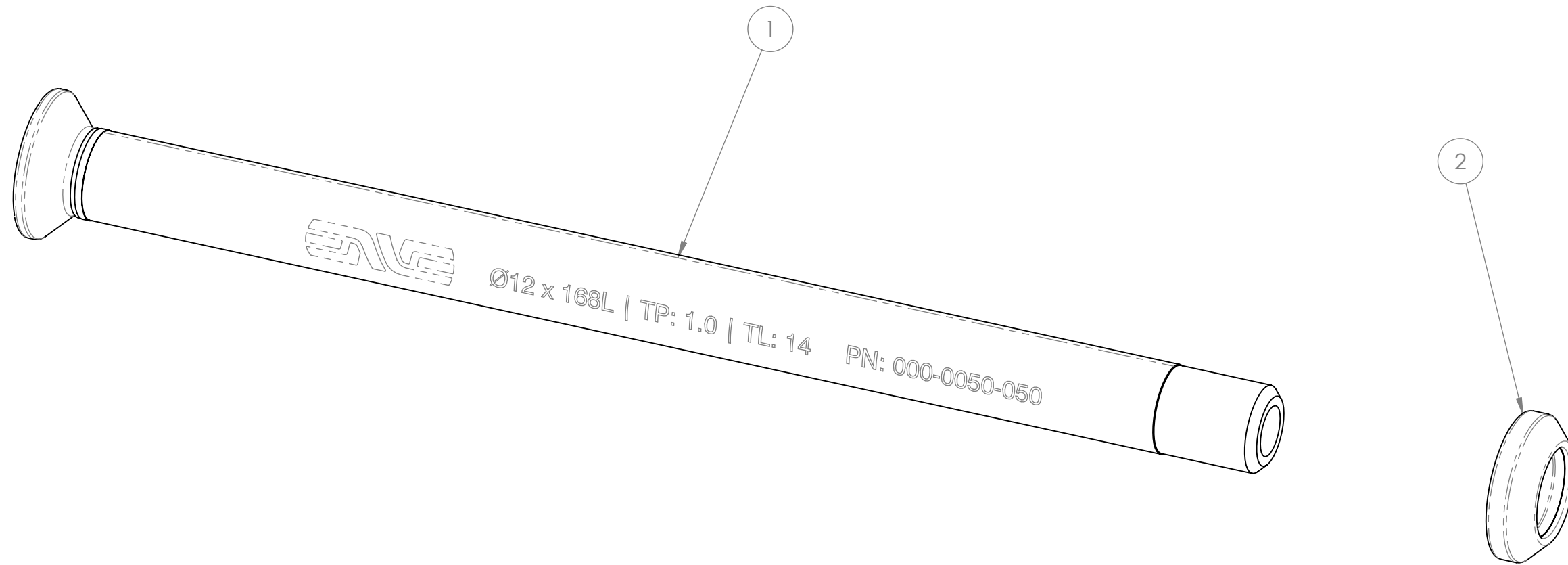
ITEM NO.	PART NUMBER	DESCRIPTION	QTY.
1	000-0050-046	M4x0.7 x 8mm Set Screw w/ Threadlock, Cup Point, Stainless, Black	4




<b>PROPRIETARY AND CONFIDENTIAL</b>		NAME	DATE			
THE INFORMATION CONTAINED IN THIS DRAWING IS THE SOLE PROPERTY OF ENVE COMPOSITES INC. ANY REPRODUCTION IN PART OR AS A WHOLE WITHOUT THE WRITTEN PERMISSION OF ENVE COMPOSITES INC. IS PROHIBITED.	DRAWN	S. Neperud	S. Neperud		05/2022	
	CHECKED					
	ENG APPR.					
	MFG APPR.					
	Q.A.					
INTERPRET GEOMETRIC TOLERANCING PER: ASME Y14.5-2009 MATERIAL FINISH	UNLESS OTHERWISE SPECIFIED:			DESCRIPTION: <b>Service Frame M4 Fender Mount Screw Kit</b>		
DO NOT SCALE DRAWING	DIMENSIONS ARE IN MILLIMETRES TOLERANCES: ANGULAR: ±1° UNSPECIFIED XX ±0.5 ONE PLACE DECIMAL XX.X ±0.2 TWO PLACE DECIMAL XX.XX ±0.10		SIZE <b>B</b>		DWG. NO. 000-0050-946	REV
	SCALE: 5:1	WEIGHT:	SHEET 12 OF 21			

# SERVICE KIT 000-0050-950

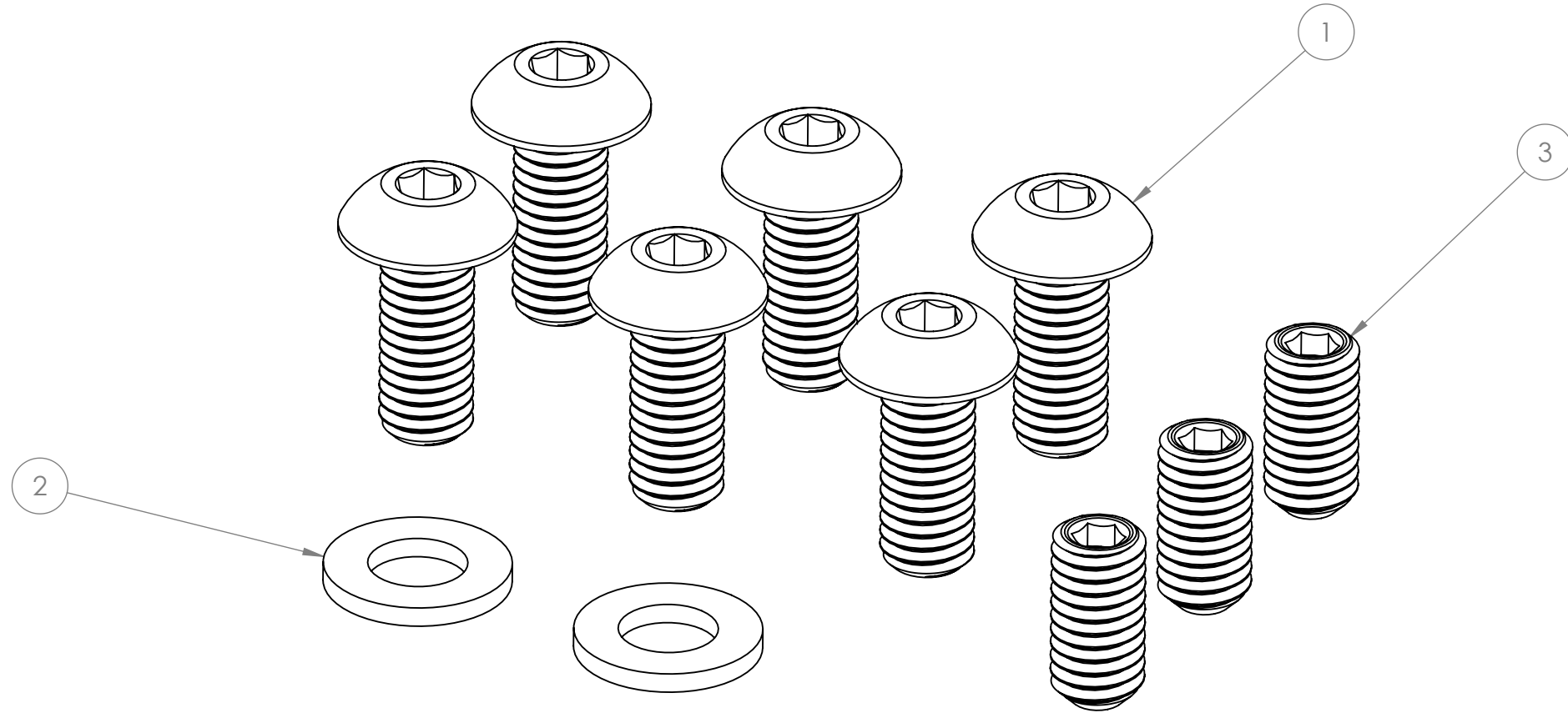
ITEM NO.	PART NUMBER	DESCRIPTION	QTY.
1	000-0050-050	Enve 12x142 Tapered Thru Axle for SRAM UDH	1
2	200-2009-006	Tapered 12mm Thru-Axle Washer	1




<b>PROPRIETARY AND CONFIDENTIAL</b>		NAME	DATE	
THE INFORMATION CONTAINED IN THIS DRAWING IS THE SOLE PROPERTY OF ENVE COMPOSITES INC. ANY REPRODUCTION IN PART OR AS A WHOLE WITHOUT THE WRITTEN PERMISSION OF ENVE COMPOSITES INC. IS PROHIBITED.		DRAWN S. Neperud	S. Neperud	
		CHECKED		
		ENG APPR.		
		MFG APPR.		
INTERPRET GEOMETRIC TOLERANCING PER: ASME Y14.5-2009		UNLESS OTHERWISE SPECIFIED:		
MATERIAL		DIMENSIONS ARE IN MILLIMETRES TOLERANCES: ANGULAR: ±1° UNSPECIFIED XX ±0.5 ONE PLACE DECIMAL XX.X ±0.2 TWO PLACE DECIMAL XX.XX ±0.10		
FINISH		SIZE	DWG. NO.	REV
DO NOT SCALE DRAWING		<b>B</b>	000-0050-950	
		SCALE: 3:2	WEIGHT:	SHEET 13 OF 21

# SERVICE KIT 000-0050-903

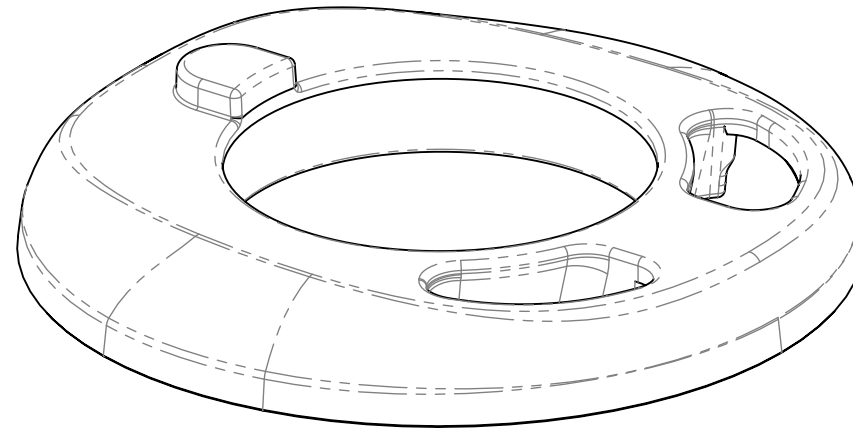
ITEM NO.	PART NUMBER	DESCRIPTION	QTY.
1	000-0050-003	M5 x 0.8 x 12mm Button Head Screw, Alloy, Black Ano	6
2	000-0050-008	M5 Washer, Alloy, Black Ano	2
3	000-0050-023	M5x0.8 x 10mm Cup-Point Set Screw, Chromoly, Black	3




<b>PROPRIETARY AND CONFIDENTIAL</b>		NAME	DATE	 <b>DESCRIPTION:</b> Service M5 Accessory Bolt Kit
THE INFORMATION CONTAINED IN THIS DRAWING IS THE SOLE PROPERTY OF ENVE COMPOSITES INC. ANY REPRODUCTION IN PART OR AS A WHOLE WITHOUT THE WRITTEN PERMISSION OF ENVE COMPOSITES INC. IS PROHIBITED.		DRAWN S. NeperudS. Neperud	01/05/2022	
		CHECKED		
		ENG APPR.		
		MFG APPR.		
		Q.A.		
INTERPRET GEOMETRIC TOLERANCING PER: ASME Y14.5-2009 MATERIAL		UNLESS OTHERWISE SPECIFIED:		
FINISH		DIMENSIONS ARE IN MILLIMETRES TOLERANCES: ANGULAR: ±1° UNSPECIFIED XX ±0.5 ONE PLACE DECIMAL XX.X ±0.2 TWO PLACE DECIMAL XX.XX ±0.10		
DO NOT SCALE DRAWING		SIZE <b>B</b>	DWG. NO. 000-0050-903	REV
		SCALE: 3:1	WEIGHT:	SHEET 14 OF 21

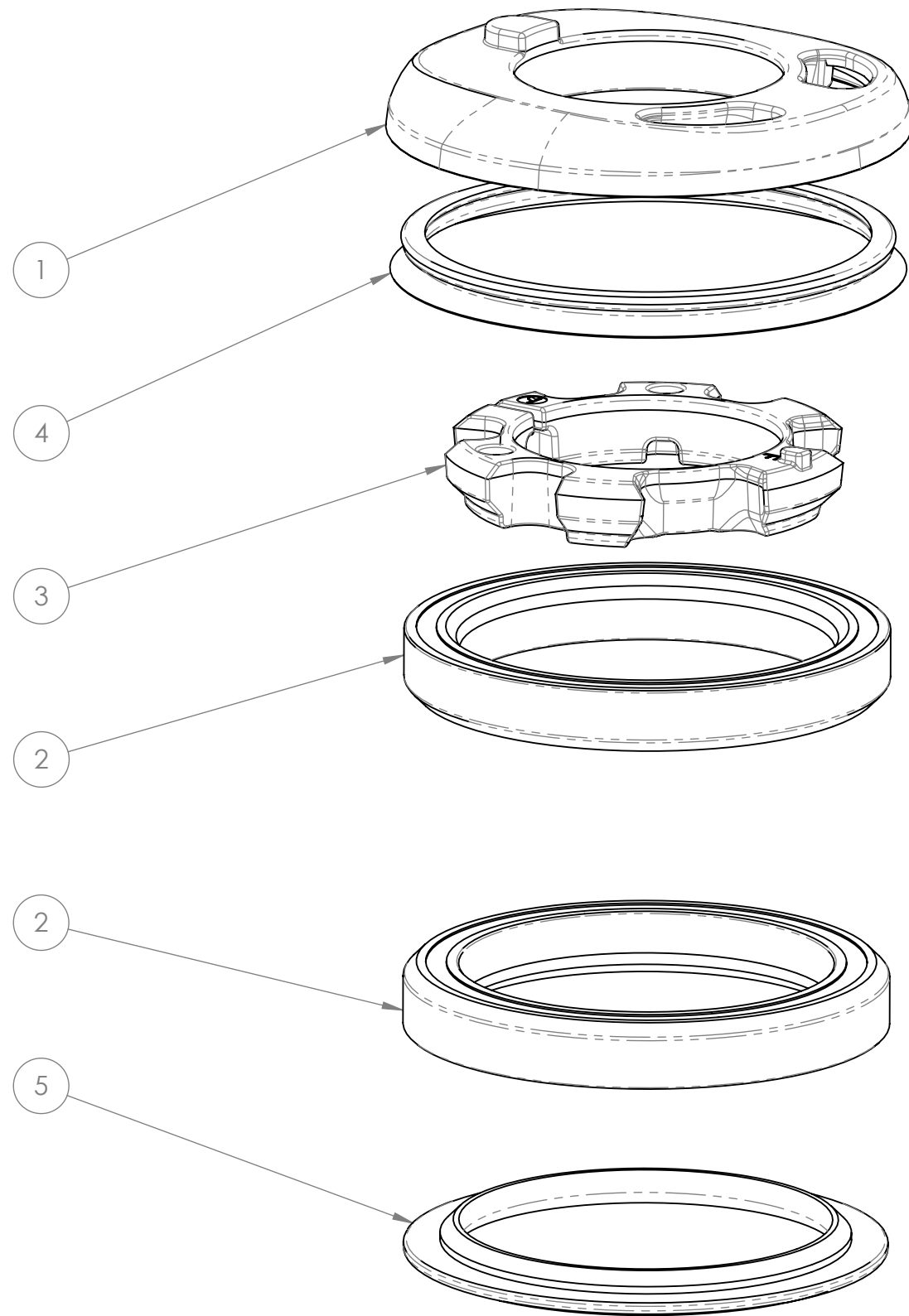
SERVICE PART 100-5004-030

ITEM NO.	PART NUMBER	DESCRIPTION	QTY.
1	100-5004-030	HS INT Classic Top Bearing Cover Sand	1




<b>PROPRIETARY AND CONFIDENTIAL</b>  THE INFORMATION CONTAINED IN THIS DRAWING IS THE SOLE PROPERTY OF ENVE COMPOSITES INC. ANY REPRODUCTION IN PART OR AS A WHOLE WITHOUT THE WRITTEN PERMISSION OF ENVE COMPOSITES INC. IS PROHIBITED.	DRAWN S. Neperud S. Neperud 01/05/2022	NAME DATE	  <b>DESCRIPTION:</b> HS INT Classic Top Bearing Cover Sand
	CHECKED		
	ENG APPR.		
	MFG APPR.		
INTERPRET GEOMETRIC TOLERANCING PER: ASME Y14.5-2009 MATERIAL FINISH DO NOT SCALE DRAWING	UNLESS OTHERWISE SPECIFIED:  DIMENSIONS ARE IN MILLIMETRES TOLERANCES: ANGULAR: ±1° UNSPECIFIED XX ±0.5 ONE PLACE DECIMAL XX.X ±0.2 TWO PLACE DECIMAL XX.XX ±0.10	Q.A.	SIZE <b>B</b> DWG. NO. 100-5004-030 SCALE: 2:1 WEIGHT: SHEET 15 OF 21
			REV

# SERVICE KIT 100-5005-005



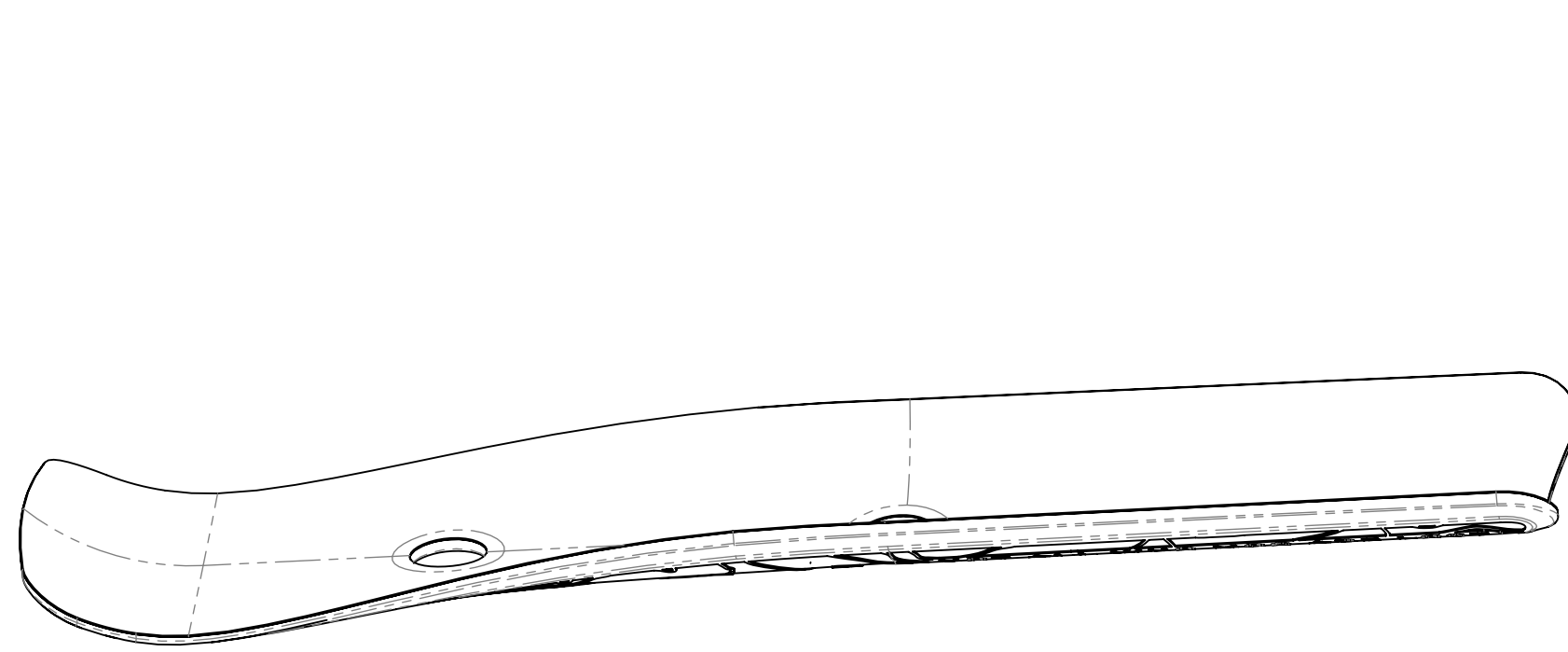
ITEM NO.	PART NUMBER	DESCRIPTION	QTY.
1	100-5005-008	HS INT Classic Bearing Cover Raw	1
2	100-5005-013	Token 52mm HS Bearing	2
3	100-5005-009	Token/ENVE Internal-Routing HS Compression Ring	1
4	100-5005-010	Token Internal-Routing Headset Dust Seal	1
5	-	Token Press-Fit Crown Race for 52mm Bearing	1

<b>PROPRIETARY AND CONFIDENTIAL</b>		NAME	DATE	 <b>DESCRIPTION:</b> HS INT Classic IS52/IS52 w Crown Race
THE INFORMATION CONTAINED IN THIS DRAWING IS THE SOLE PROPERTY OF ENVE COMPOSITES INC. ANY REPRODUCTION IN PART OR AS A WHOLE WITHOUT THE WRITTEN PERMISSION OF ENVE COMPOSITES INC. IS PROHIBITED.		DRAWN S. Neperud	01/05/2022	
		CHECKED		
		ENG APPR.		
		MFG APPR.		
INTERPRET GEOMETRIC TOLERANCING PER: ASME Y14.5-2009 MATERIAL		UNLESS OTHERWISE SPECIFIED:		
FINISH		DIMENSIONS ARE IN MILLIMETRES TOLERANCES: ANGULAR: ±1° UNSPECIFIED XX ±0.5 ONE PLACE DECIMAL XX.X ±0.2 TWO PLACE DECIMAL XX.XX ±0.10		
DO NOT SCALE DRAWING		SIZE <b>B</b>	DWG. NO. 100-5005-005	REV P2
		SCALE: 3:2	WEIGHT:	SHEET 16 OF 21



SERVICE PART 100-5004-024

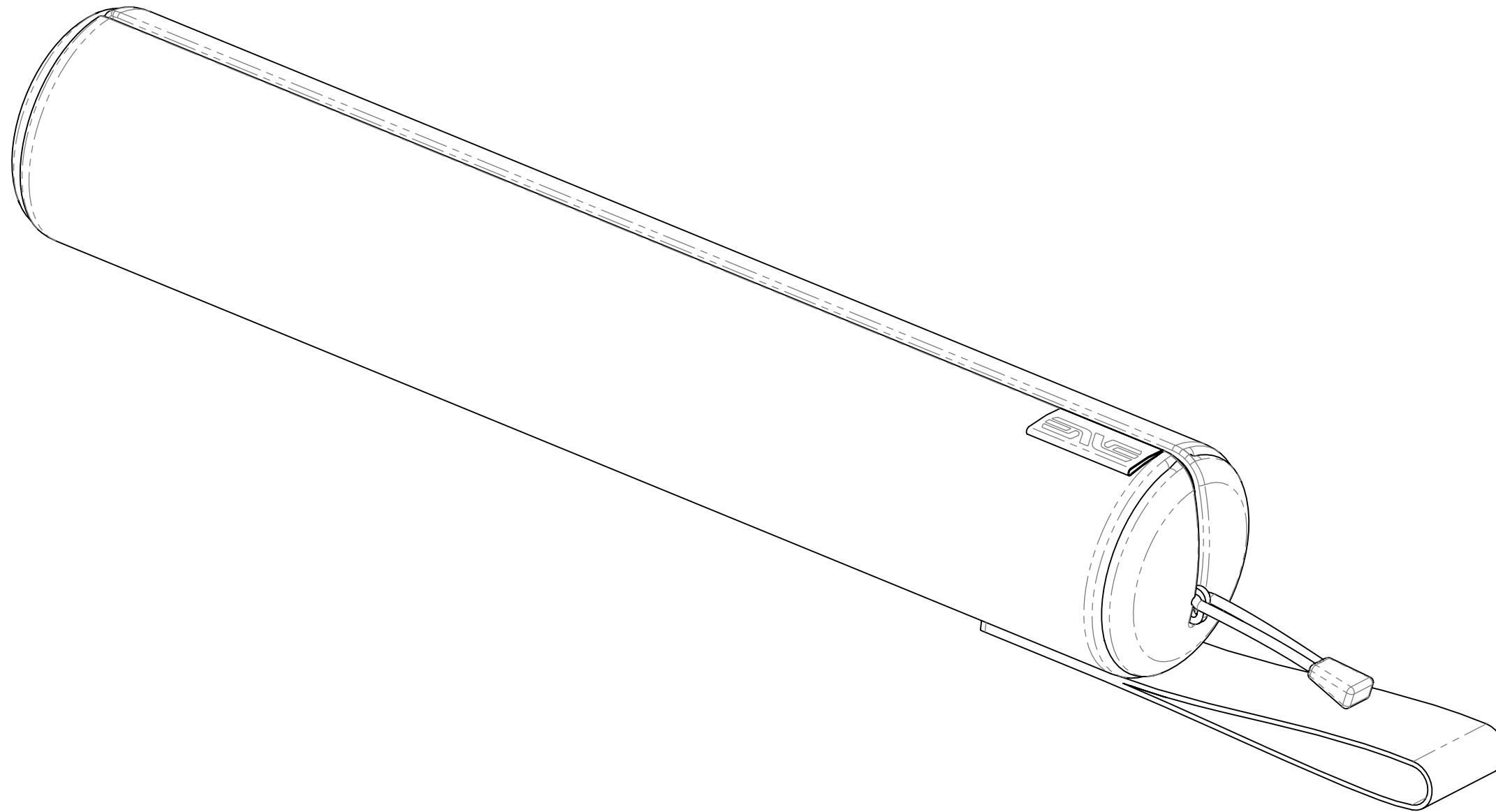
ITEM NO.	PART NUMBER	DESCRIPTION	QTY.
1	100-5004-024	Mog Downtube Guard	1




<p><b>PROPRIETARY AND CONFIDENTIAL</b></p> <p>THE INFORMATION CONTAINED IN THIS DRAWING IS THE SOLE PROPERTY OF ENVE COMPOSITES INC. ANY REPRODUCTION IN PART OR AS A WHOLE WITHOUT THE WRITTEN PERMISSION OF ENVE COMPOSITES INC. IS PROHIBITED.</p> <p>INTERPRET GEOMETRIC TOLERANCING PER: ASME Y14.5-2009</p> <p>MATERIAL <b>SEE NOTES</b></p> <p>FINISH</p> <p>DO NOT SCALE DRAWING</p>	<p>DRAWN S. Neperud</p> <p>CHECKED</p> <p>ENG APPR.</p> <p>MFG APPR.</p> <p>Q.A.</p>	<p>NAME</p> <p>DATE</p>	<p>UNLESS OTHERWISE SPECIFIED:</p> <p>DIMENSIONS ARE IN MILLIMETRES</p> <p>TOLERANCES:</p> <p>ANGULAR: ±1°</p> <p>UNSPECIFIED XX ±0.5</p> <p>ONE PLACE DECIMAL XX.X ±0.2</p> <p>TWO PLACE DECIMAL XX.XX ±0.10</p>	<p><b>ENVE</b> ENVE COMPOSITES</p> <p>DESCRIPTION: <b>Mog Downtube Guard</b></p>	<p>SIZE <b>B</b></p> <p>DWG. NO. 100-5004-024</p> <p>SCALE: 1:1</p>	<p>REV P4</p> <p>WEIGHT:</p>	<p>SHEET 17 OF 21</p>
	<p>DATE: 04/05/2022</p>	<p>SIZE: B</p>	<p>REV: P4</p>	<p>WEIGHT:</p>	<p>SHEET 17 OF 21</p>		
	<p>DATE: 04/05/2022</p>	<p>SIZE: B</p>	<p>REV: P4</p>	<p>WEIGHT:</p>	<p>SHEET 17 OF 21</p>		
	<p>DATE: 04/05/2022</p>	<p>SIZE: B</p>	<p>REV: P4</p>	<p>WEIGHT:</p>	<p>SHEET 17 OF 21</p>		
	<p>DATE: 04/05/2022</p>	<p>SIZE: B</p>	<p>REV: P4</p>	<p>WEIGHT:</p>	<p>SHEET 17 OF 21</p>		

SERVICE PART 100-5004-027

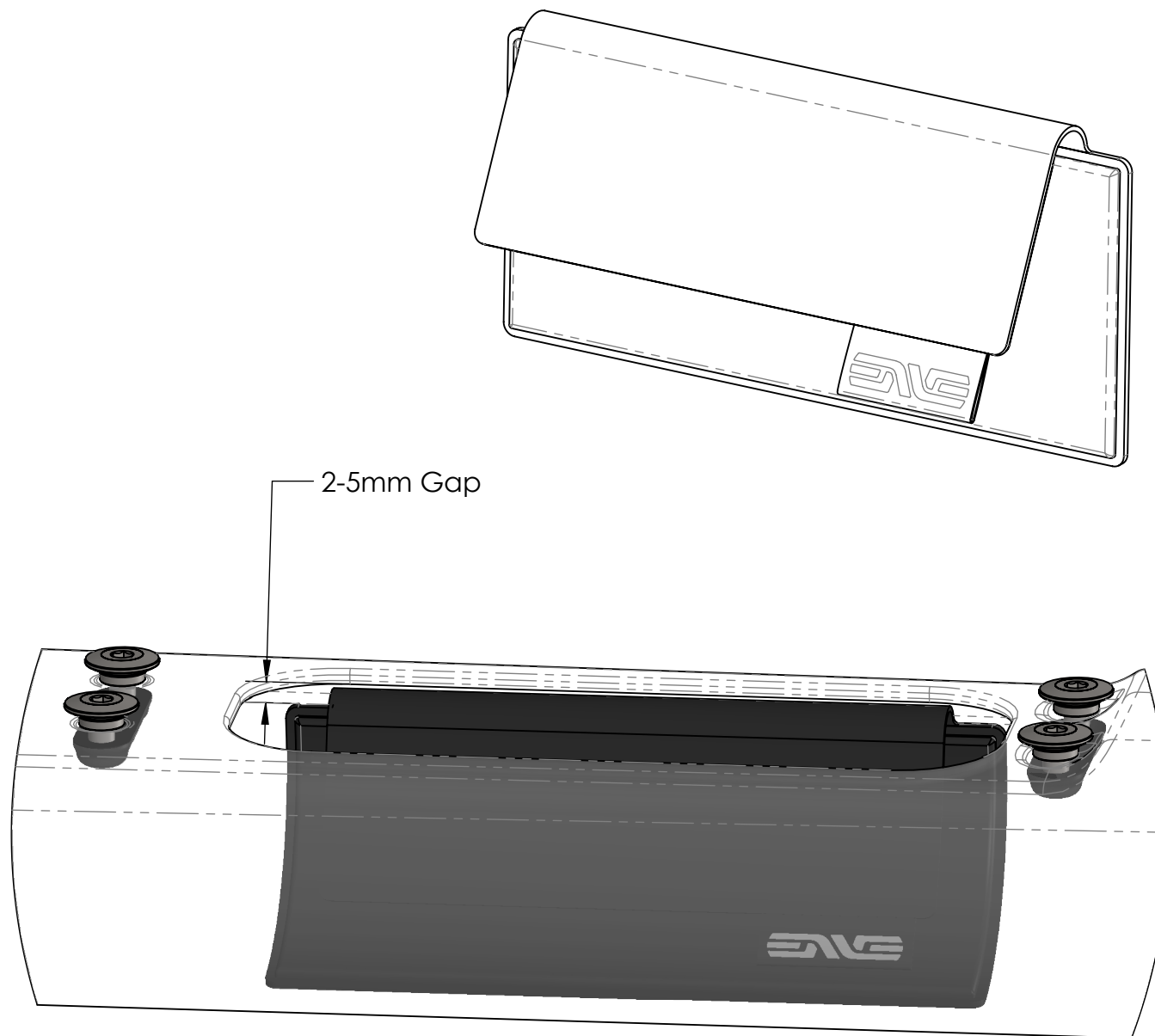
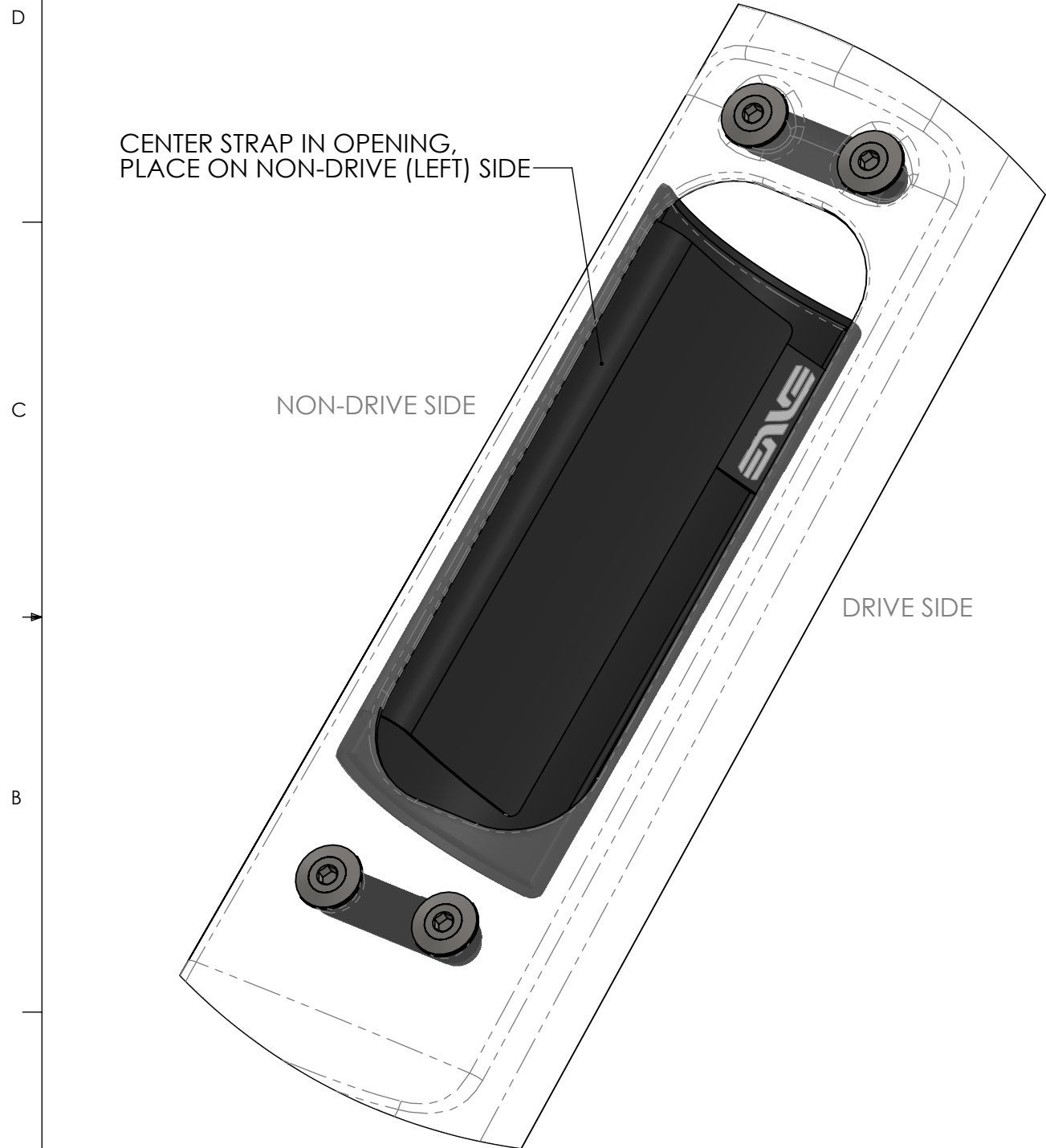
ITEM NO.	PART NUMBER	DESCRIPTION	QTY.
1	100-5004-027	Cargo Bay Storage Bag	1



<b>PROPRIETARY AND CONFIDENTIAL</b>		NAME	DATE	 <b>DESCRIPTION:</b> Cargo Bay Storage Bag
THE INFORMATION CONTAINED IN THIS DRAWING IS THE SOLE PROPERTY OF ENVE COMPOSITES INC. ANY REPRODUCTION IN PART OR AS A WHOLE WITHOUT THE WRITTEN PERMISSION OF ENVE COMPOSITES INC. IS PROHIBITED.		DRAWN S. Neperud	01/05/2022	
		CHECKED		
		ENG APPR.		
		MFG APPR.		
INTERPRET GEOMETRIC TOLERANCING PER: ASME Y14.5-2009 MATERIAL FINISH DO NOT SCALE DRAWING		UNLESS OTHERWISE SPECIFIED: DIMENSIONS ARE IN MILLIMETRES TOLERANCES: ANGULAR: ±1° UNSPECIFIED XX ±0.5 ONE PLACE DECIMAL XX.X ±0.2 TWO PLACE DECIMAL XX.XX ±0.10		SIZE <b>B</b> DWG. NO. 100-5004-027 SCALE: 1:1
		Q.A.		REV WEIGHT: SHEET 18 OF 21

SERVICE PART 100-5004-028

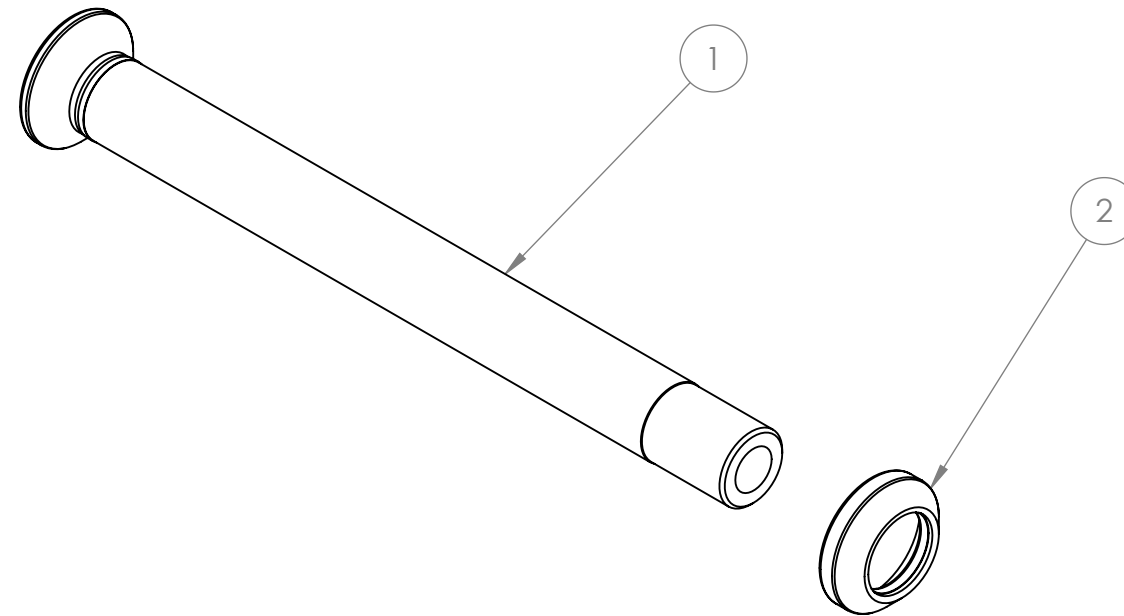
ITEM NO.	PART NUMBER	DESCRIPTION	QTY.
1	100-5004-028	Cable Management Strap	1




<p><b>PROPRIETARY AND CONFIDENTIAL</b></p> <p>THE INFORMATION CONTAINED IN THIS DRAWING IS THE SOLE PROPERTY OF ENVE COMPOSITES INC. ANY REPRODUCTION IN PART OR AS A WHOLE WITHOUT THE WRITTEN PERMISSION OF ENVE COMPOSITES INC. IS PROHIBITED.</p> <p>INTERPRET GEOMETRIC TOLERANCING PER: ASME Y14.5-2009</p> <p>MATERIAL</p> <p>FINISH</p> <p>DO NOT SCALE DRAWING</p>	<p>NAME</p> <p>DATE</p> <p>DRAWN S. Neperud S. Neperud 01/05/2022</p>	<p><b>ENVE</b> ENVE COMPOSITES</p> <p>DESCRIPTION: <b>Cable Management Strap</b></p>			
	<p>CHECKED</p> <p>ENG APPR.</p> <p>MFG APPR.</p> <p>Q.A.</p>		<p>SIZE</p> <p><b>B</b></p>	<p>DWG. NO.</p> <p>100-5004-028</p>	<p>REV</p>
	<p>UNLESS OTHERWISE SPECIFIED:</p> <p>DIMENSIONS ARE IN MILLIMETRES</p> <p>TOLERANCES:</p> <p>ANGULAR: ±1°</p> <p>UNSPECIFIED XX ±0.5</p> <p>ONE PLACE DECIMAL XX.X ±0.2</p> <p>TWO PLACE DECIMAL XX.XX ±0.10</p>		<p>SCALE: 1:1</p>	<p>WEIGHT:</p>	<p>SHEET 19 OF 21</p>
	<p>DO NOT SCALE DRAWING</p>		<p>SCALE: 1:1</p>	<p>WEIGHT:</p>	<p>SHEET 19 OF 21</p>
	<p>DO NOT SCALE DRAWING</p>		<p>SCALE: 1:1</p>	<p>WEIGHT:</p>	<p>SHEET 19 OF 21</p>

# SERVICE KIT 200-2009-008

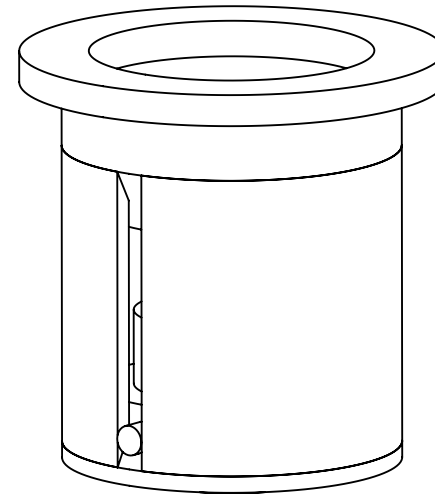
ITEM NO.	PART NUMBER	DESCRIPTION	QTY.
1	200-2009-005	Tapered Thru-Axle for Road/Gravel Forks	1
2	200-2009-006	Tapered 12mm Thru-Axle Washer	1




<b>PROPRIETARY AND CONFIDENTIAL</b>  THE INFORMATION CONTAINED IN THIS DRAWING IS THE SOLE PROPERTY OF ENVE COMPOSITES INC. ANY REPRODUCTION IN PART OR AS A WHOLE WITHOUT THE WRITTEN PERMISSION OF ENVE COMPOSITES INC. IS PROHIBITED.	DRAWN S. Neperud S. Neperud 01/05/2022	NAME DATE	  <b>DESCRIPTION:</b> Tapered Thru-Axle 12x100 Assembly		
	CHECKED				
	ENG APPR.				
	MFG APPR.				
	Q.A.				
INTERPRET GEOMETRIC TOLERANCING PER: ASME Y14.5-2009 MATERIAL FINISH DO NOT SCALE DRAWING	UNLESS OTHERWISE SPECIFIED:  DIMENSIONS ARE IN MILLIMETRES TOLERANCES: ANGULAR: ±1° UNSPECIFIED XX ±0.5 ONE PLACE DECIMAL XX.X ±0.2 TWO PLACE DECIMAL XX.XX ±0.10		SIZE <b>B</b>	DWG. NO. 200-2009-008	REV
	SCALE: 1:1	WEIGHT:	SHEET 20 OF 21		

SERVICE KIT 200-0000-032

ITEM NO.	PART NUMBER	DESCRIPTION	QTY.
1	200-0000-032	Compression Plug Assembly W/O Top Cap	1



<b>PROPRIETARY AND CONFIDENTIAL</b>		NAME	DATE				
THE INFORMATION CONTAINED IN THIS DRAWING IS THE SOLE PROPERTY OF ENVE COMPOSITES INC. ANY REPRODUCTION IN PART OR AS A WHOLE WITHOUT THE WRITTEN PERMISSION OF ENVE COMPOSITES INC. IS PROHIBITED.		DRAWN	S. Neperud S. Neperud		05/2022		
		CHECKED					
		ENG APPR.					
		MFG APPR.					
INTERPRET GEOMETRIC TOLERANCING PER: ASME Y14.5-2009		UNLESS OTHERWISE SPECIFIED:		DESCRIPTION: <b>Compression Plug Assembly W/O Top Cap</b>			
MATERIAL		DIMENSIONS ARE IN MILLIMETRES TOLERANCES: ANGULAR: ±1° UNSPECIFIED XX                    ±0.5 ONE PLACE DECIMAL XX.X        ±0.2 TWO PLACE DECIMAL XX.XX      ±0.10			SIZE <b>B</b>	DWG. NO. 200-0000-032	REV P2
FINISH		DO NOT SCALE DRAWING			SCALE: 2:1	WEIGHT:	SHEET 21 OF 21