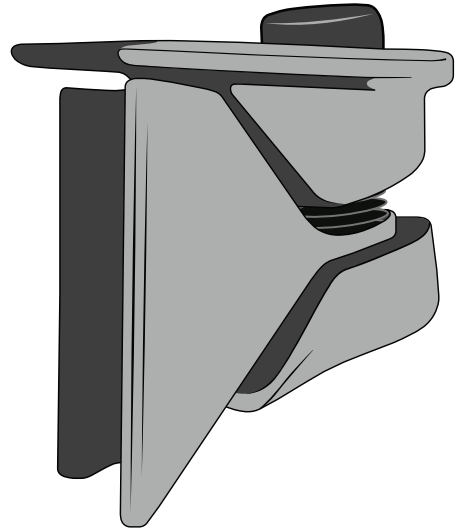


# Seatpost Wedge Installation

*Don't forget to  
register your product.*



## Tools Needed:

Carbon  
Grit Paste

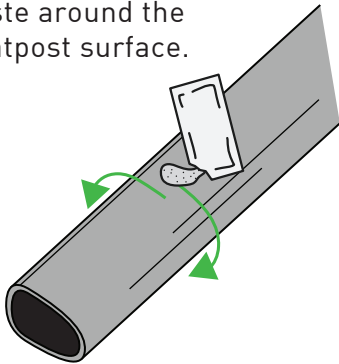


5 mm Hex,  
Torque  
Wrench



1. Apply carbon grit paste to the portion of the seatpost to be inserted into the frame.

Apply the carbon grit paste around the seatpost surface.



2. Ensure that seatpost is installed to a minimum insertion of 75mm to meet minimum insertion requirements.
3. Tighten the seatpost wedge bolt to 6 Nm using a 5mm hex bit and torque wrench.

**DO NOT** grease bolt threads, or the sliding wedge surfaces.

