



Seatpost Installation Instructions

ENVE® Composites, LLC
Ogden, UT 84404, USA



ENVE® Composites LLC
Ogden, UT 84404, USA

ENVE® SEATPOST

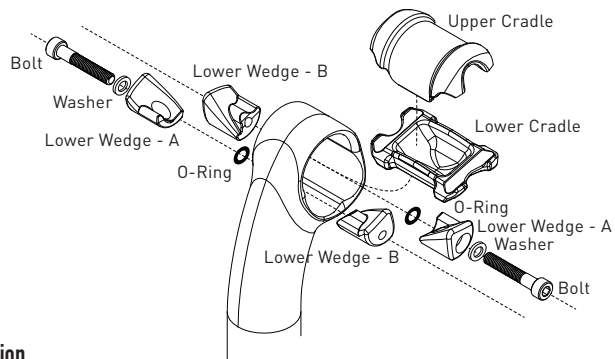
Tools Required:

4 mm Hex Wrench

Parts

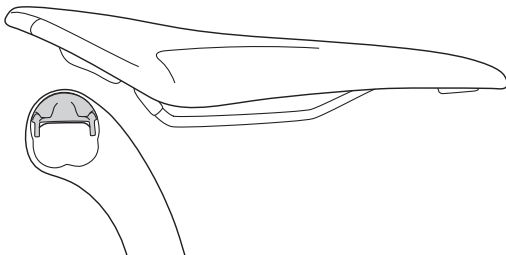
The saddle clamping system of the seat post includes the following parts:

- 2x: A - Lower wedge for angle adjustment (For bolt head)
- 2x: B - Lower wedge for angle adjustment (For bolt thread)
- 2x: 30 mm bolts for the lower wedge
- 2x: Washers and O-Rings
- 1x: Upper seat cradle - 7mm rails
- 1x: Upper seat cradle - 7x10mm rails (For carbon fiber rails)
- 1x: Lower seat cradle



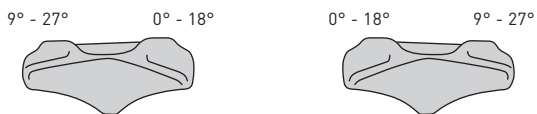
Installation

Step 1: Place the upper seat cradle into the seatpost and slide onto the rails through the rear of the saddle.

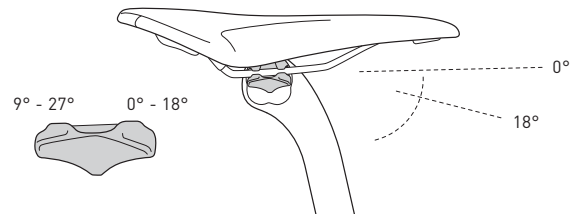


Step 2: Insert the lower seat cradle into the seat post by sliding it in from the side below the saddle and into place.

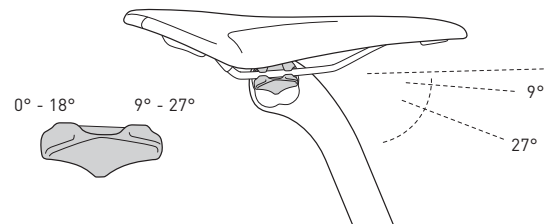
Tech Note: Turning the lower seat cradle 180° will allow for different ranges of saddle tilt adjustment upon how it is placed.



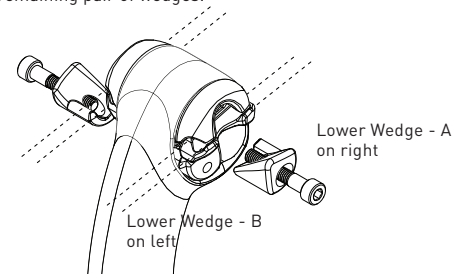
The 0° - 18° label on the cradle faces forward: This will allow the saddle angle to adjust from 0° to 18°.



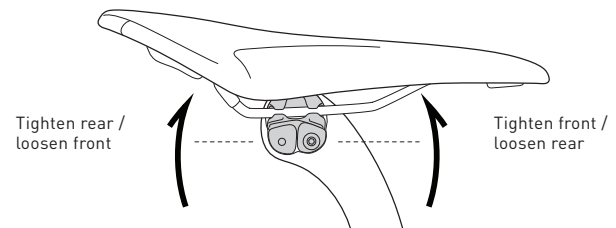
The 9° - 27° label on the cradle faces forward: This will allow the saddle angle to adjust from 9° to 27°.



Step 3: Insert the lower wedges into place by running one bolt with a washer through a pair of wedges. Begin to thread the bolts but do not tighten the wedges together completely yet. Do the same with the remaining pair of wedges.



Step 4: Adjust the seatpost angle by tightening or loosening the two pairs of wedges. Tightening the front bolt and loosening the rear bolt will turn the saddle upward. Tightening the rear bolt and loosening the front bolt will turn the saddle downward.



Step 5: Once the saddle is adjusted to the desired angle, alternate tightening the front and rear bolts in quarter turn increments until 5.5 Nm is reached.