

Seat Post Assembly Instructions:

Tools needed:

5mm Allen Wrench, Torque Wrench, Synthetic Grease (very small amount)

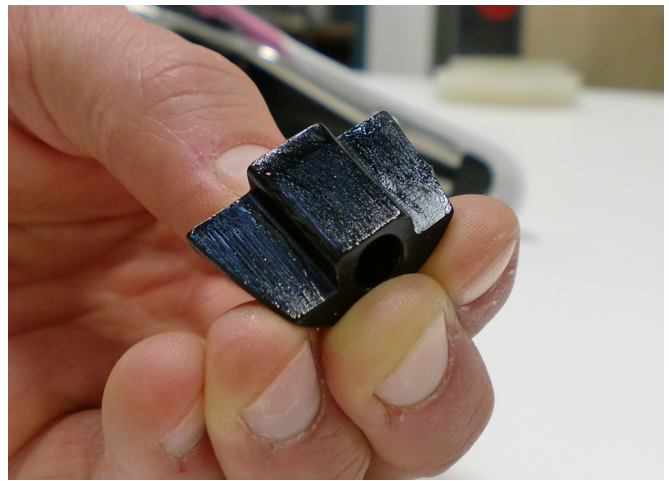
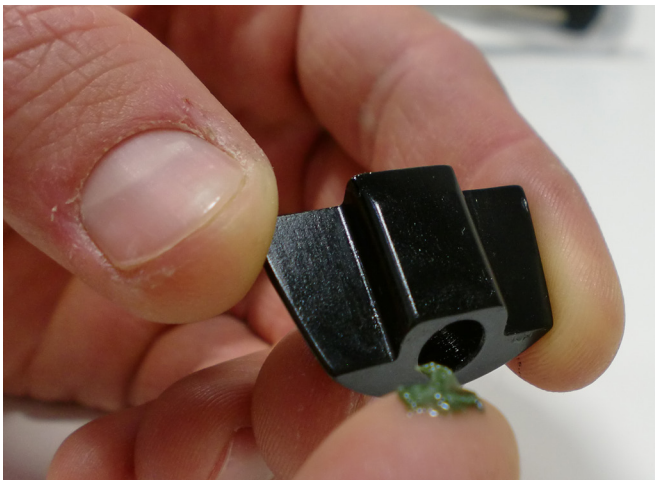
Disassemble you seat post by loosening the bolt and removing the 2 wedges along with the lower rail cradle. Leave upper cradle installed in post head.



Slide seat post head with upper cradle between the rails of the saddle. Start from the back of the saddle with post rotated 90°; slide the post towards the front of the saddle and rotating it back to proper position as you are sliding it forward.



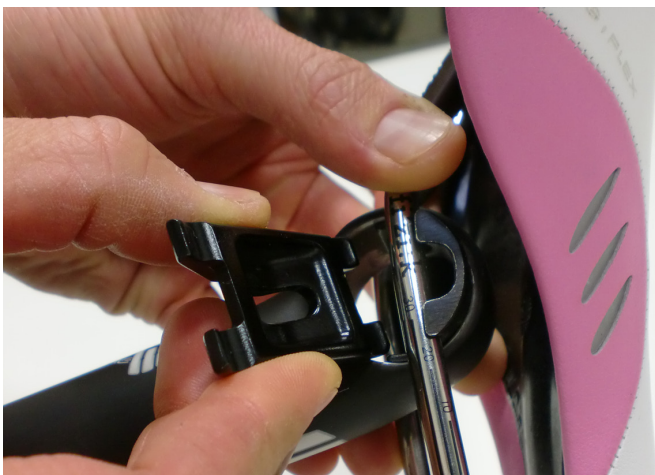
Apply very light coating of grease to each sliding wedge interface. **Be very careful not to get grease on the bottom of the wedges that interface with the seat post barrel.** This can cause saddle slipping issues.



Apply grease to the threads of the bolt and slide bolt into the wedge piece with the non-threaded recessed hole.



Install lower rail cradle



Slid in the right side wedge and bolt w/ greased surface interfacing with the lower rail cradle, and hold in place.



With you other hand, pick up the left side wedge and line it up with the bolt. Pinch assembly to hold it all in place.



Use your 5mm Allen wrench to tighten the bolt until the clamp assembly is compressed. Leave assembly loose enough to saddle angle and position.



Once desired position is achieved, tighten bolt to 12nm.

Enjoy!