



WHEEL USER MANUAL

JOIN THE RIDER'S CLUB

www.enve.com/ridersclub

Welcome to the ENVE Family.

The ENVE Warranty and Lifetime Incident Protection Program are made available to the original owner of ENVE manufactured products.

ENVE Lifetime Incident Protection Program

ENVE products are designed so you can ride and race in total confidence. While ENVE carbon is engineered to lead the market in strength and durability, ENVE carbon is not indestructible. If you exceed the limits or your product while riding, crashing, or driving your roof mounted bike into your garage - don't worry, we've got your back. This program was created to take care of those ill-fated mishaps and keep you rolling in the ENVE family for life.

ENVE Warranty

ENVE warrants all rims, components, and hard goods be free from non-conformance with ENVE material and workmanship specifications for the practical lifespan of the product for Rider's Club members. Please visit www.enve.com/warranty for further information.

Submitting A Warranty Claim

When submitting a warranty, you can either work directly with us or through your dealer. Either way, we'll try to make it as fast and easy as possible. Although not required for warranty, it is recommended that you join the ENVE Rider's Club and register your product to streamline the warranty process.

Through ENVE

1. Locate your product serial number and record it.
2. Take a photo of the affected product area.
3. Send an email to support@enve.com with the photo, serial number, description of the damage, and proof of purchase. Please include your phone number and shipping address details.
4. We will respond within 24 hours to get you back riding as soon as possible!!

Through Your Dealer

1. Locate your product serial number and record it.

2. Take the affected product into your dealer. Please don't forget your proof of purchase.
3. We will work with your dealer to get the product back as soon as possible.

ENVE Wheelsets Include:

Road Wheels

- ENVE Quick Release Skewers (SES rim and disc brake road wheels if applicable) (Thru-axles are never included with ENVE wheelsets, thru-axles are delivered with your frame and fork)
- 8 x ENVE Brake Pads (SES rim brake road wheels)
- 2 x ENVE Valve Extenders with rims deeper than 30mm
- 2 x 700c ENVE Rim Strip (SES 4.5 clincher only)
- 1 x Lightweight Tubeless Kit - 1 x Roll Tape, 2 x Tubeless Valve Extenders, 1 x Valve Core Remover (Tubeless Compatible Clinchers Only)

Mountain Wheels

- 1 x Tubeless Kit - 1 x Roll Tape, 2 x Tubeless Valve Stems, 1 x Valve Core Remover

SAFETY

To ensure that you maximize the service life of your wheels and your experience with ENVE is the best, please read and follow these instructions in their entirety. Even if you have ridden for years, the instructions and tips presented here are specific for ENVE wheels and you should be familiar with them before your first ride. If you have questions after you read this manual, talk to your ENVE dealer or contact ENVE customer service at support@enve.com or 877-358-2869. in the USA and visit www.ENVE.com/contact/ for other countries.

Rider Warning:

Riding a bicycle is inherently dangerous and exposes the rider to many hazards including the unavoidable risk of personal injury or death. We strongly suggest that if you are not a highly skilled bicycle mechanic with professional tools that you leave all installation and service to an ENVE Authorized Dealer or a reputable bicycle shop.

ENVE designs, tests, and qualifies wheels for very specific purposes. Use only genuine ENVE replacement parts where applicable. Bicycles are subject to wear and high stresses. If the design life of a component has been exceeded, it may fail suddenly, causing injuries to the rider. Any visible cracks, scratches, or discolorations may indicate that the component has been overstressed and it should be replaced. Subjecting your wheels to disciplines other than what they were designed for is unwise and may result in wheel failure, personal injury, or death.

Before You Ride:

- Check that your axles, dropouts, and quick release mechanisms are clean and free of dirt or other debris. Ensure that your quick releases or thru-axle wheel retention devices are secured properly. The quick-releases should emboss the dropouts when closed to the locked position. If you are unsure whether your quick release or thru-axle is installed correctly, please consult your dealer.
- Check spokes for tension and damage. If you locate any loose or damaged spokes, contact your ENVE


authorized dealer to have your wheels serviced.

- Make sure that your brakes are connected and functioning properly. This includes checking the alignment of your pads to ensure they match the braking surface of the rim for rim brake compatible wheels and ensuring that your pads contact the rotor and are not showing excessive signs of wear on a disc brake compatible set up.
- Install or ask your local dealer to install your ENVE Composites supplied brake pads. These pads have been optimized to provide you with the best braking performance available. **ENVE requires the use of these pads in order for ENVE's Lifetime Loyalty Guarantee to be valid.** Replacement pads may be purchased from your local dealer or at www.ENVE.com/products/brake-pads

Replace your brake pads at the beginning of each season or when:

- They show signs of uneven wear.
- They wear beyond the wear indicator line.

- They become contaminated. Contaminants include but are not limited to sand, mud, oil, and alloy particles from use with alloy rims.

 **Tech Note:** Check your brake pads regularly to ensure that there are no contaminants that will damage your full-carbon braking surface. Keep pads and rim clean at all times to avoid pad glazing and loss of braking power.

Spoke Tension Recommendations:

Front Rim Brake 90 kgf

Front Disc Brake Side 120 kgf

Front Disc Non-Brake Side: Whatever tension is required for dish

Rear Drive Side 120 kgf

Rear Non-Drive Side: Whatever tension is required for dish

Recommended Tire Size:

Please visit www.ENVE.com/support for the most up to date tire size recommendation for your wheelset.

Please visit www.ENVE.com/support for the most up to date minimum, recommended, and maximum tire pressures for your wheelset.

ENVE Brake Pad Installation

Tools Required:

- 2mm or 2.5mm Allen Wrench
- Needle Nose Pliers (optional)

If your pads slide out towards the front of the bike, then the brake pad carriers were installed incorrectly.

Reverse the direction of the pad carriers so the pads can only be removed when pushed or pulled towards the back of the bike. If you are not confident that you can complete this installation properly, please visit your local bike shop for assistance.

 **WARRANTY IS VOID IF YOU DON'T USE ENVE BRAKE PADS!**

Installation of Shimano/SRAM Style Black Brake Pad

1. If available, place your bike in a bike stand so that you can remove the wheels and still work on your bike.

2. Using an Allen wrench, remove the retention screws from all four pad carriers. Set the screws aside in a safe place where you won't lose or drop them.

3. Slide pads out towards the rear of the bicycle. If you cannot accomplish this using your fingers, use needle nose pliers.

4. Install each pad to the proper corresponding carrier. Each pad is labeled "Left" or "Right" and has an arrow indicating the forward direction in which the pad should be oriented.

5. Replace each retention screw and tighten according to manufacturer specifications.

Installation of Campagnolo Style Brake Pad

1. If available, place your bike in a bike stand so that you can remove the wheels and still work on your bike.

2. In 2011, Campagnolo fitted their brake pad carriers with a retention clip that is not present on models prior to 2011. To remove your pads lift the retention tab and pull the pad out towards the back of the bike until the depression in the

pad clears the retention tab, and proceed to completely remove the brake pad.

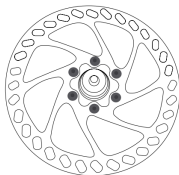
3. Install each pad to the proper corresponding carrier. Each pad is labeled "Left" or "Right" and has an arrow indicating the forward direction in which the pad should be oriented.

4. Ensure that the retention clip has seated into the depression in the brake pad.

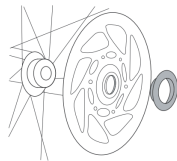
Using Wheels with Disc Brakes

For wheels with disc brakes, make sure the brake rotor attachment is tight:

1. Tighten rotor bolts to 5-6.2 Nm.
2. Tighten a Centerlock nut to 40.2 Nm



Rotor Bolts



Centerlock Nut

ENVE Valve Extender Installation – Road Only

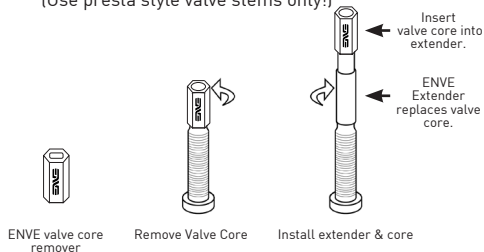
For a video of a valve extender install, please visit:
<https://vimeo.com/envecomposites/valve-stem-extension-installation>

Tools Required:

- 5mm Open End Wrench, ENVE valve core remover, or Needle Nose Pliers

NOTE: Install the valve extenders before installing your tubes or tubular. Inner-tubes and tubulars must have removable valve cores.

1. Locate the valve stem of your tube or tubular.
(Use presta style valve stems only!)



2. Using a 5mm open end wrench, ENVE valve core remover, or needle nose pliers, remove the valve core from the stem of the tube or tubular.
3. In place of the valve core, thread in your ENVE Valve Extender until finger tight, and then tighten the extender an additional quarter to half turn with your tool of choice.
4. Replace stock valve core into opposite end of the ENVE Valve Extender.
5. Repeat on other tube or tubular.

ENVE Clincher Tire Installation (For SES 4.5 Clincher Only)
(For all other SES wheels see tubeless installation)

For install videos and instructions, please visit:
www.enve.com/installation

Below is a basic guide to mounting clincher tires on your new ENVE carbon clincher rims.

Installing Rim Strip

NOTE: Only use ENVE supplied rim strips. Use of Velox® or similar thick cloth tape is not recommended as it will

make tire installation more difficult.

1. Locate the valve stem hole in the rim and align it with the hole punched in your ENVE supplied rim strip.
2. With ENVE logo facing up, stretch the rim strip over the rim.
3. Check the entire circumference of the rim to make sure that the rim strip is centered; that there are no creases or folds; and that all the spoke holes are covered.

Installing Tires

4. Determine the recommended rotational direction as suggested by the tire manufacturer. Not all tires are directional but an arrow will generally be present on the sidewall of the tire to indicate the proper rotational direction.
5. Using only your hands, mount one side of the tire bead onto the rim aligning the tire's logo with the rim's valve stem hole.

6. Inflate your inner-tube just until it takes shape.
7. Install the tube's valve stem into the rim's valve stem hole, and proceed by seating the tube in between the rim and tire. Be careful not to twist or fold the tube.
8. Install the other tire bead onto the rim using caution not to pinch the tube between the rim and tire bead.

NOTE: ENVE does not recommend the use of tire levers to install or remove your tires. However, we understand that there are moments when the use of a tire lever is necessary. When using a tire lever, only use PLASTIC levers, and be careful not to pinch your inner-tube during the install.



Place first bead in the rim.



Push inner tube into the channel.



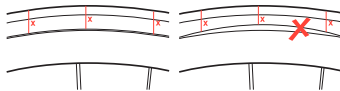
Do not pinch the inner tube between the tire and rim.



Install remaining bead in the rim.

Tech Note: If it is difficult to fully install the second side of the tire bead, check that the tube around the area of the valve stem is not pinched under the tire bead, and that the tire bead is not hung up on the outer edge. If so, push the valve stem in towards the tire and try mounting the bead again.

9. Inflate the tire to 20-30 psi and ensure that both tire beads are properly seated and that no tube is sticking out. Correct as necessary.
10. Inflate the tire to full pressure. When you spin the wheel the tire should not hop or wander side to side.



Proper installation

Improper installation.
Tire bead is not seated.

ENVE Tubular Tire Installation

Gluing tubular tires is best reserved for someone familiar with the process and requires 2-3 days to do a proper job. We highly recommend that an experienced bicycle technician with gluing experience mount your tubulars. Below is a basic guide to mounting tubular tires on your new ENVE carbon tubular rims. Always refer to the glue manufacturer's instructions as processes may vary.

Note: When removing tubular tires from an ENVE rim, remove slowly and with care. Quick and careless removal may damage the rim.

Tools required:

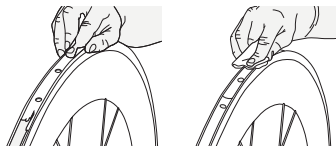
- Truing Stand to hold wheel
- Rags
- Alcohol or Acetone (be careful as contact will damage the decals.)
- Acid Brush
- Latex Gloves

- Floor Pump
- Abrasive pad (Scotch Brite) or 120 Grit Sandpaper
- Tubular Glue

Before you Glue:

Time required – 15 Minutes

1. If applicable, install the valve extenders provided with your ENVE rims on your tubular.
2. Prepare the rim by cleaning the tire bed of the rim using either the 120 grit or finer sand paper or an abrasive pad. Starting at the valve hole, work your way around the entire tire bed surface of the rim. Apply acetone to a rag and clean surface of the tire bed until no sanding residue appears on your rag.



NOTE: Acetone will damage your decals.

The day before you intend to glue or tape your rims, install your tires on the rim to pre-stretch them and ensure proper fit. Once installed, inflate them to within 10-20 psi of the rated max pressure.

Tech Note: This is a good opportunity to become familiar with installing the tubular on the rim. Practice this several times before glue. Once you have glue on the rim and tubular, you will only get one chance!

We recommend a minimum 12-24 hour stretch time, but refer to the tire manufacturer's instructions for specific recommendations.

Gluing Tubular Tires:

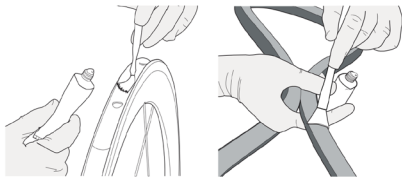
For install videos and instructions, please visit:
www.enve.com/installation

Time Required – Generally 72 hrs before you can ride

Step 1 - Total Time Required – 12 Hours

1. Place your wheel in the truing stand.

2. Inflate your tubular just until the tire twists and the base tape faces outward.
3. Put on your latex gloves and open the glue container or tube.
4. Grab your brush and apply a light and even coat of glue to both the rim and the base tape of the tubular. Be sure to apply an even coat of glue across the entire surface of the rim's tire bed and tubular's base tape. Be careful to not get glue inside the spoke holes of the rim.



5. Set rims and tubular aside for drying in a dust free, well ventilated area.
6. Refer to the glue manufacturer's instructions for proper drying times.

Step 2 – After the glue has dried according to the manufacturer's recommendation, repeat Step 1.

Step 3 – Repeat Step 2 and install

Total Time Required – 12 Hours

1. After applying your third and final coat of glue to both the rim and tubular, you are ready to mount the tubular to the rim. You should let the rim and tubular sit for a few minutes before mounting the tire.
2. Tech Note: Some will recommend that the third and final coat be applied only to the rim. Refer to the glue manufacturer's instructions to ensure you obtain the best adhesion possible.
3. Deflate the tubular and remove the rim from the truing stand.

4. Hold the rim between your feet on the floor on a clean, non-slip surface. A piece of clean cardboard works well.
5. Put the valve stem through the rim's valve stem hole. Press down firmly.
6. Grab the tire to the left and right of the valve stem and work the tire onto the rim working down toward the floor.
7. When you get to the floor pick up the wheel and slide the remaining tire onto the rim using your thumbs.
8. Quickly check that the tire is centered on the rim.
9. Inflate the tire just enough so that it takes shape and check to see that an equal amount of base tape is showing on both sides around the rim.
10. Inflate the tire to 50 psi (3.4 bar) and place it in your truing stand. Spin the tire slowly and make sure that the tire is not wandering from side to side. If it is, deflate the tire slightly and move it over until the tubular is completely centered on the rim showing

equal amounts of base tape on both sides of the rim. Repeat this step as necessary.


11. Inflate tire to recommended pressure.
12. Clean any excess glue from the rim and brake track using your rag and acetone.
13. Allow 24 hours for glue to dry before you ride
14. After 24 hours, check both your front and rear wheels to ensure that the tires are adhered properly. To do this, grab the tire with both hands and with moderate force try to roll the tire off the rim. If it holds you are ready to ride!

Road Tubeless Kit and Tire Installation

For install videos and instructions, please visit:
www.enve.com/installation

Tools Required

- ENVE Tubeless Kit (2 Valve Extenders, 1 roll of tape)

 **Caution: FAILURE TO IGNORE THIS WARNING CAN RESULT IN THE PRESSURIZATION OF THE RIM CAVITY**

AND SUBSEQUENT SIDEWALL DELAMINATION.

Air leaking through the valve stem ports and/or weep hole in the rim during inflation is indicative of a poorly seated valve stem or breach in the tubeless tape system. Ensure that the valve stem is completely seated by pressing down firmly until it conforms to the rim channel. With pressure on the valve stem, tighten valve with fingers only. DO NOT TIGHTEN LOCK NUT WITH PLIERS. Inspect tape for tears, holes, or poor adherence. After inspection and tire install, if air continues to purge through rim's valve stem, remove tire, remove tape, wipe rim with isopropyl alcohol, and reinstall tape. Reinstall tire following instructions in this manual.

- Scissors
- Floor Pump
- Plastic Tire Lever (optional)
- Tire Sealant
- Alcohol or Acetone
- Rag

Rim Preparation:

- Wipe the tire bed of the rim clean using your rag and

acetone to ensure that the surface is free of grease and debris.

Installation of ENVE Tubeless Kit

1. Thoroughly clean the inner rim channel with acetone or alcohol to completely clean the carbon surface.
2. Begin applying tape to the rim tire bed where the tape covers one spoke hole past the valve stem hole. From there, tape towards the valve stem hole.
3. Apply with a generous amount of tension to ensure that the tape conforms to the lower rim channel. Avoid using direct pressure and use of bare hands to not damage the tape.

Tech Note: Subtle rotations of the wrist back and forth will conform the tape sufficiently to the rim.

4. **Add one layer of tape**, continuing past the starting point and finish with a 2-3 inch (5-8cm) overlap. The overlap should cross over the valve stem hole.

Tech Note: The reinforcement found 180° from the valve

stem hole on the rim should be completely covered by tape.

5. Press the valve stem through the tape at the valve stem hole after closing the valve core and firmly seat the stem in position until it conforms to the shape of the rim channel. Install the valve stem lock-ring with the rubber O-ring between the rim and lock-ring. Finger tighten.
6. Install the tire and fill with air until tire bead pops into place. This conforms the tape to rim bed completely. Deflate the tire and insert latex sealant either through the valve stem or by opening the tire bead and pouring directly into the tire and filling tire to desired air pressure.

Installing the Tire

Road wheels set up tubeless must be used with Tubeless Certified Tires.

If you have questions related to tire choice please contact ENVE Customer Service 877-358-2869.

1. Determine the recommended rotational direction as suggested by the tire manufacturer. Not all tires are directional but an arrow will generally be present on the sidewall of the tire to indicate the proper rotational direction.
2. Using only your hands, mount one side of the tire bead onto the rim aligning the tire's logo with the rim's valve stem hole.
3. Mount the opposite tire bead, starting opposite the valve stem and working down both sides of the rim towards the valve stem.

Tech Note: Latex based sealants are safe to use in ENVE road and mountain wheels however there are many tire manufacturers that do not permit the use of sealant with their tires. Check with the tire manufacturer if you are unsure whether your tires are sealant approved.

4. Insert the remaining portion of tire bead into the rim.



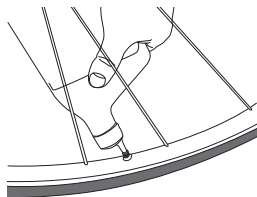
Place first bead in the rim.



Install remaining bead in the rim.

This will definitely require two hands and some muscle.

5. Install sealant through valve hole with core removed.



6. Inflate the tire to lock the beads into the rim. You will hear and feel them snap into place.

⚠ CAUTION: IT IS NOT NORMAL TO HEAR THE RIM ITSELF MAKE CREAKING OR CRACKING NOISE DURING TIRE INFLATION. IF YOU HEAR THIS, STOP INFLATION AND/OR DEFLATE RIM IMMEDIATELY. REFERENCE TUBELESS KIT TECH NOTES TO ENSURE RIM CAVITY HAS NOT BEEN PRESSURIZED.

7. Verify that the bead is fully seated by checking that the bead seat indicator line is equally displayed above the rim edge around the entire rim. If not, deflate and retry.
8. Tech Note: Never exceed maximum pressure rating of the rim while attempting to seat the tire bead. Use soapy water as a lubricant on beads that are hard to seat.

Removing the Tire

1. Deflate the tire.
2. Opposite the valve stem, push one bead of the tire into the center channel of the rim and then remove the bead. You will most likely need to use a plastic tire lever, but before you do make sure the bead is completely loose and

resting in the center channel.

3. Repeat for opposite bead.

Mountain Tubeless Kit and Tire Installation

For a video of a mountain tubeless install, please visit: <https://vimeo.com/envecomposites/mountain-tubeless-install>

Tools Required

- ENVE Tubeless Kit (2 Valve Extenders, 1 roll of tape)

⚠ Caution: FAILURE TO IGNORE THIS WARNING CAN RESULT IN THE PRESSURIZATION OF THE RIM CAVITY AND SUBSEQUENT SIDEWALL DELAMINATION.

Air leaking through the valve stem ports and/or weep hole in the rim during inflation is indicative of a poorly seated valve stem or breach in the tubeless tape system. Ensure that the valve stem is completely seated by pressing down firmly until it conforms to the rim channel. With pressure on the valve stem, tighten valve with fingers only. DO NOT TIGHTEN LOCK NUT WITH PLIERS. Inspect tape for tears, holes, or poor adherence. After inspection and tire install, if air continues to purge through rim's valve stem, remove tire, remove tape, wipe rim with isopropyl alcohol, and reinstall tape. Reinstall tire following instructions in this manual.

- Scissors
- Floor Pump
- Plastic Tire Lever (optional)
- Tire Sealant
- Alcohol or Acetone
- Rag

Rim Preparation:

- Wipe the tire bed of the rim clean using your rag and acetone to ensure that the surface is free of grease and debris.

Installation of ENVE Tubeless Kit

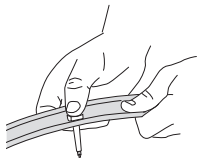
1. Thoroughly clean the inner rim channel with acetone or alcohol to completely clean the carbon surface.
 2. Begin applying tape to the rim tire bed where the tape covers one spoke hole past the valve stem hole. From there, tape towards the valve stem hole.
 3. Apply with a generous amount of tension to ensure that the tape conforms to the lower rim channel. Avoid using direct pressure and use of bare hands to not damage the tape.
- Tech Note:** Subtle rotations of the wrist back and forth will conform the tape sufficiently to the rim.
4. Continue past the starting point and finish with a 2-3 inch (5-8cm) overlap. The overlap should cross over the valve stem hole.
- Tech Note:** The reinforcement found 180° from the valve stem hole on the rim should be completely covered by tape.
5. Press the valve stem through the tape at the valve stem hole after closing the valve core and firmly seat the stem in position until it conforms to the shape of the rim channel. Install the valve stem lock-ring with the rubber O-ring between the rim and lock-ring. Finger tighten.
 6. Install the tire and fill with air until tire bead pops into place. This conforms the tape to rim bed

completely. Deflate the tire and insert latex sealant either through the valve stem or by opening the tire bead and pouring directly into the tire and filling tire to desired air pressure.

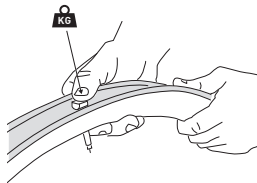
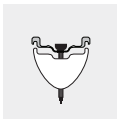
Protective Rim Strip Installation

M730, M735, M735E, M930 Series wheels

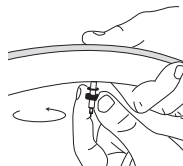
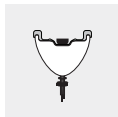
1



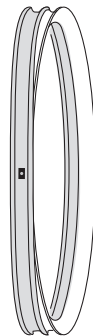
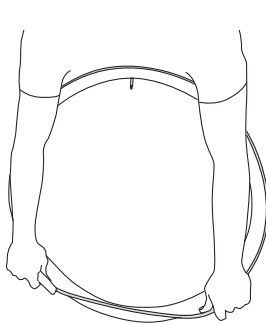
2



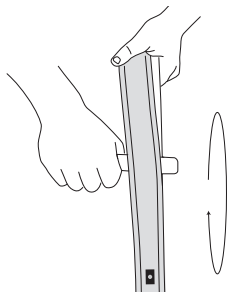
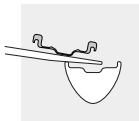
3



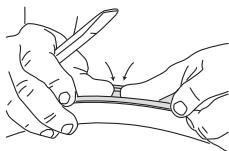
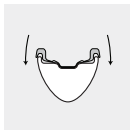
4



5



6



Installing the Tire

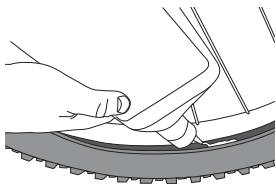
Tech Note: ENVE Composites mountain rims are designed around tubeless mountain tire standards. For maximum tubeless performance use tubeless ready tires.

If you have questions related to tire choice please contact ENVE Customer Service 877-358-2869.

1. Determine the recommended rotational direction as suggested by the tire manufacturer. Not all tires are directional but an arrow will generally be present on the sidewall of the tire to indicate the proper rotational direction.
2. Using only your hands, mount one side of the tire bead onto the rim aligning the tire's logo with the rim's valve stem hole.
3. Mount the opposite tire bead, starting opposite the valve stem and working down both sides of the rim towards the valve stem. Leave enough tire bead (generally 5-8 inches) exposed so that you can install your tire sealant of choice.

Tech Note: Latex based sealants are safe to use in ENVE road and mountain wheels however there are many tire manufacturers that do not permit the use of sealant with their tires. Check with the tire manufacturer if you are unsure whether your tires are sealant approved.

4. Install sealant, and rotate the wheel so that the sealant is opposite of the open tire bead.



5. Insert the remaining portion of tire bead into the rim. This will definitely require two hands and some muscle.
6. Inflate the tire to lock the beads into the rim. You will hear and feel them snap into place.

7. Verify that the bead is fully seated by checking that the bead seat indicator line is equally displayed above the rim edge around the entire rim. If not, deflate and retry.

Tech Note: Never exceed maximum pressure rating of the rim while attempting to seat the tire bead. Use soapy water as a lubricant on beads that are hard to seat.

Removing the Tire

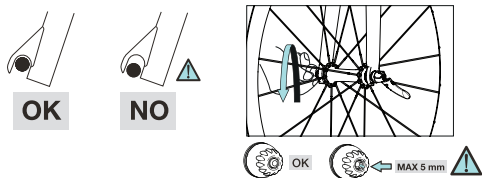
1. Deflate the tire.
2. Opposite the valve stem, push one bead of the tire into the center channel of the rim and then remove the bead. You will most likely need to use a plastic tire lever, but before you do make sure the bead is completely loose and resting in the center channel.
3. Repeat for opposite bead.

Please visit www.ENVE.com/support for troubleshooting if you are having issues with your tubeless setup.

Wheel Installation

Pre-Ride Inspection

1. Close the brake caliper quick release mechanisms (if applicable) and check that your brakes are functioning properly. For a mountain bike with disc brakes, spin your wheels to ensure that your rotors are not rubbing and that the brakes are working properly.



2. Make sure that both your front and rear wheels are centered in the fork and frame. If they are not, you will need to loosen the quick release and ensure that the axle ends are even in the dropout and tighten quick releases again to the correct tension. Double

check that the quick release retention springs are installed correctly (smaller end facing inward). If after several attempts you are unable to center the wheel, consult your local ENVE dealer or a professional bike mechanic.

3. Preferably with your bike in a stand or by picking up the rear end of the bike, shift through the gears to ensure that the shifting system is working properly, the rear derailleur is not contacting the spokes, and that the wheel spins true.

General Care and Maintenance

- You may clean your ENVE wheels you may use soap and water.
- Store your wheels in a dry location.
- Store your wheels away from direct sunlight. Extended exposure to UV rays may cause discoloration of rims.
- To remove tubular glue or adhesive from the rim you may use alcohol or acetone.

NOTE: If using Acetone, avoid contact with the decals as this will damage them.

- Inspect your wheelset regularly for proper spoke tension, vertical and lateral true, wheel dish, bearing play, and bearing smoothness. Service related to any of the above issues should be performed by a professional bike mechanic.
- Visually inspect carbon braking surface and wipe surface clean with a soft cloth. If rim shows notable cupping, grooves, or consistent wear through multiple layers of carbon fiber, call ENVE Customer Service before riding your wheels again. After you've ensured that there is nothing on the brake track that could cut you, run your fingers over the brake track. If brake track feels consistent in elevation and texture, go ride. If any damage or questionable wear is discovered while inspecting your rim, contact ENVE Customer Service (877-358-2869) for assistance before your next ride.

- Once a year, inspect the inside of your rim using a flashlight to check for nipple corrosion.
- If any damage or questionable wear is discovered while inspecting your rim, contact ENVE Customer Service (877-358-2869) for assistance before your next ride.

**Thank you for choosing ENVE. If you have any questions, please do not hesitate to call or visit www.enve.com/support
Don't forget to join the Rider's Club at enve.com/ridersclub**

#IRIDEENVE

CONTACT INFO:

ENVE Composites

508 W Stockman Way
Ogden, UT 84401 USA

p: 877.358.2869

e: support@enve.com

France

+33 1 7343 0228

Belgium

+33 1 7343 0228

Switzerland

+41 3 15603819

Luxembourg

+35 2 2088 1033

Austria

+43 1 205109012

Germany

+49 9 1195153137

UK

+44 2 033215486

Finland

+35 894 259 8694

Netherlands

+31 3 47799239

Spain

+34 917909975

Italy

+39 0 645208627

Australia

+03 88781000



OGDEN, UT 84401 | ENVE.COM